

Anti-Influenza B Virus NP Antibody [Clone IB07]

Catalog Number	LDG0182YA
Package	100 µg / Customized package

For full product information, images and publications, please visit [our website](#).



Overview

Description

Anti-Influenza B virus NP Antibody [clone IB07] only recognizes nucleocapsid protein (NP) of influenza B viruses but not influenza A viruses. Influenza B viruses are RNA viruses and divided into two genetic lineages (B/Yamagata and B/Victoria). Influenza B viruses are not classified by subtype like influenza A viruses.

Product Note

Recognize Influenza B virus NP in Lateral Flow, when clone IB07 antibody was paired with AntiInfluenza B virus NP Antibody [clone IB08] (cat. LDG0183YA).

Recommended dilution factor:
ELISA: 1:5000-20000

Note: Working dilution for specific application should be determined by the investigator to obtain the best conditions.

Specifications

Host

Mouse

Clonality

Monoclonal

Isotype

IgG1

Clone Name

clone IB07

Immunogen

Recombinant Influenza B virus Nucleocapsid protein

Reactivity

Influenza B virus

Tainan Headquarters

+886-6-2536677

bd@leadgene.com.tw

Innovation & Research Center

+886-2-27065528

CLD Center

+886-6-2536677

Application

ELISA, CLIA, LFIA

Conjugation

Unconjugated

Concentration

1 mg/mL

Storage Buffer

Phosphate Buffered Saline containing 0.03% ProClin 300, pH 7.4.

Specificity

Nucleocapsid protein

Form

Liquid

Instruction**Shipping**

The product is shipped with polar packs. Upon receipt, store it immediately at -20°C or lower for long term storage.

Stability & Storage

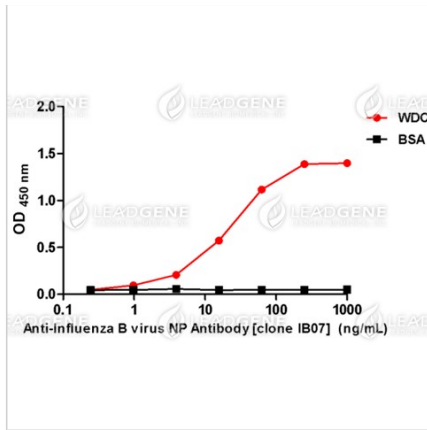
This product is stable after storage at:

- 2-8°C for 2 weeks under sterile conditions from date of receipt.
- -20°C or -80°C for 12 months under sterile conditions from date of receipt.

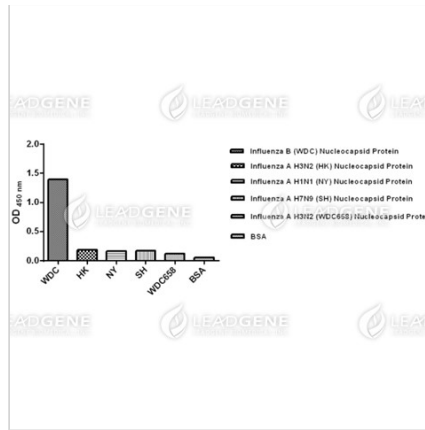
Avoid repeated freeze/thaw cycles.

Suggestion: Divide antibody into several vials. Keep only vials for usage at 2-8°C.

Image**Tainan Headquarters** +886-6-2536677 bd@leadgene.com.tw**Innovation & Research Center** +886-2-27065528**CLD Center** +886-6-2536677



ELISA titration of Anti-Influenza B virus NP Antibody [clone IB07]
Titration curve of anti-Influenza B virus NP Antibody in ELISA. Red: WDC; Black: BSA (negative control).



ELISA assay of Anti-Influenza B virus NP Antibody [clone IB07]
Indirect ELISA analysis was performed by coating a plate with recombinant NP protein of influenza B virus or influenza A virus and probing with anti-Influenza B virus NP Antibody.

Disclaimer : For Research Use or Further Manufacturing Only.