

## Mouse CCL3, His Tag, E. coli

Catalog Number	LDG017PME
Package	5 µg / 20 µg / 100 µg / Customized package

For full product information, images and publications, please visit [our website](#).



### Specifications

#### Species of Origin

Mouse

#### Affinity Tag

His Tag (N-term)

#### Purity

>98% as determined by SDS-PAGE analysis.

#### Activity

Measure by its ability to chemoattract human THP1 cells using a concentration range of 10-100 ng/mL.

#### Form

Lyophilized

#### Expression System

Escherichia coli

#### Storage Buffer

Lyophilized from a 0.2 µm filtered solution of PBS, pH 7.4.

#### Molecular weight

The protein has a calculated MW of 8.69 kDa. The protein migrates about 11 kDa under reducing condition (SDS-PAGE analysis).

#### Endotoxin Level

<0.1 EU per 1 µg of the protein by the LAL method.

### Background

#### Tainan Headquarters

+886-6-2536677

bd@leadgene.com.tw

#### Innovation & Research Center

+886-2-27065528

#### CLD Center

+886-6-2536677

### Background

C-C Motif Chemokine Ligand 3 (CCL3) is a 7.66 kDa cytokine with 69 amino acid residues. CCL3, also known as macrophage inflammatory protein 1-alpha (MIP-1-alpha), is expressed in the spleen, lung, and articular cartilage. Upon binding to the receptor, CCR1, CCR4, or CCR5, CCL3 plays a vital role in immune response, such as inflammation, recruitment of immune cells, and production of IL-1 $\beta$  and TNF. In addition, CCL3 also participates in resistance to type 1 virus infection, astrocyte cell migration, regulation of macromolecule metabolic process, and regulation of ERK1 and ERK2 cascade.

### Uniprot ID

P10855

### Synonyms

C-C motif chemokine 3, Heparin-binding chemotaxis protein, L2G25B, Macrophage inflammatory protein 1-alpha MIP-1-alpha, SIS-alpha, Small-inducible cytokine A3, TY-5

### Sequence Note

Ala24-Ala92

## Instruction

### Reconstitution

It is recommended to reconstitute the lyophilized protein in sterile H<sub>2</sub>O to a concentration of 200  $\mu$ g/mL and incubate the stock solution for at least 20 min to ensure sufficient re-dissolved.

### Stability & Storage

This product is stable after storage at:

- -20°C for 12 months in lyophilized state from date of receipt.
- -20°C or -80°C for 1 month under sterile conditions after reconstitution.

Avoid repeated freeze/thaw cycles.

### Shipping

The product is shipped with polar packs. Upon receipt, store it immediately at -20°C or lower for long term storage.

## Image

### Tainan Headquarters

+886-6-2536677

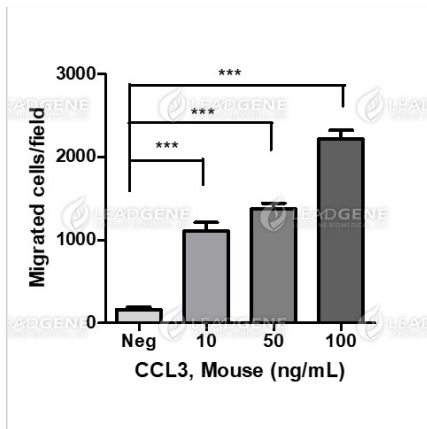
✉ [bd@leadgene.com.tw](mailto:bd@leadgene.com.tw)

### Innovation & Research Center

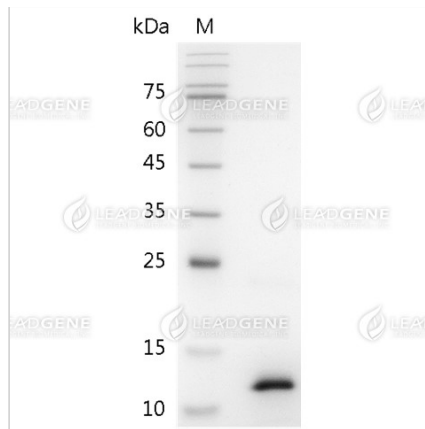
+886-2-27065528

### CLD Center

+886-6-2536677



Activity analysis of recombinant Mouse CCL3, His Tag, E. coli. Measure by its ability to chemoattract human THP1 cells using a concentration range of 10-100 ng/mL.



SDS-PAGE analysis of recombinant mouse CCL3.

**Disclaimer :** For Research Use or Further Manufacturing Only.