

## Mouse CCL2, His Tag, E. coli

Catalog Number	LDG016PME
Package	5 µg / 20 µg / 100 µg / Customized package

For full product information, images and publications, please visit [our website](#).



### Specifications

#### Species of Origin

Mouse

#### Expression System

Escherichia coli

#### Affinity Tag

His Tag (N-term)

#### Storage Buffer

Lyophilized from a 0.2 µm filtered solution of PBS, pH 7.4.

#### Purity

>98% as determined by SDS-PAGE analysis.

#### Molecular weight

The protein has a calculated MW of 14.65 kDa. The protein migrates as 17-25 kDa under reducing condition (SDS-PAGE analysis).

#### Activity

Measure by its ability to chemoattract human THP-1 cells using a concentration range of 10-100 ng/mL.

#### Endotoxin Level

<0.1 EU per 1 µg of the protein by the LAL method.

#### Form

Lyophilized

### Background

#### Tainan Headquarters

+886-6-2536677

bd@leadgene.com.tw

#### Innovation & Research Center

+886-2-27065528

#### CLD Center

+886-6-2536677

### Background

C-C Motif Chemokine Ligand 2 (CCL2) is a 13.88 kDa cytokine with 125 amino acid residues and is also known as monocyte chemoattractant protein 1 (MCP1). CCL2 is mainly secreted from monocytes, macrophages, and dendritic cells. It regulates many biological functions, such as recruitments of monocytes, memory T cells, eosinophils, and dendritic cells, extravasation of helper T cells, response to TNF $\alpha$  and IFN $\gamma$ , and angiogenesis. In addition, upon binding with CCR4, it initiates leukocyte migration response to inflammation.

### Uniprot ID

P10148

### Synonyms

C-C motif chemokine 2, Monocyte chemoattractant protein 1, Monocyte chemotactic protein 1 MCP-1, Platelet-derived Growth Factors-inducible protein JE, Small-inducible cytokine A2

### Sequence Note

Gln24-Ala127

## Instruction

### Reconstitution

It is recommended to reconstitute the lyophilized protein in sterile H<sub>2</sub>O to a concentration of 200  $\mu$ g/mL and incubate the stock solution for at least 20 min to ensure sufficient re-dissolved.

### Stability & Storage

This product is stable after storage at:

- -20°C for 12 months in lyophilized state from date of receipt.
- -20°C or -80°C for 1 month under sterile conditions after reconstitution.

Avoid repeated freeze/thaw cycles.

### Shipping

The product is shipped with polar packs. Upon receipt, store it immediately at -20°C or lower for long term storage.

## Image

### Tainan Headquarters

+886-6-2536677

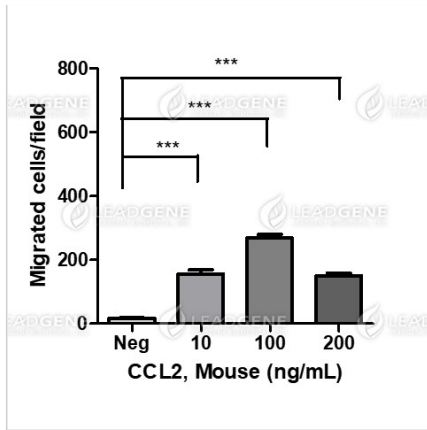
✉ [bd@leadgene.com.tw](mailto:bd@leadgene.com.tw)

### Innovation & Research Center

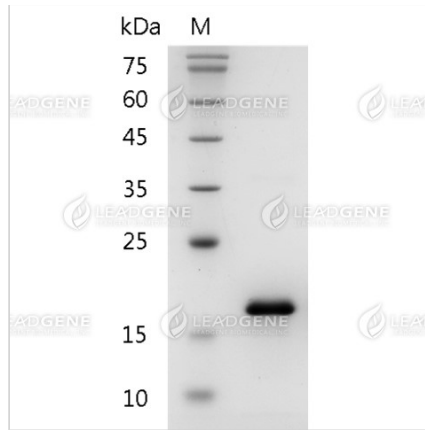
+886-2-27065528

### CLD Center

+886-6-2536677



Activity analysis of recombinant Mouse CCL2, His Tag, E. coli. Measure by its ability to chemoattract human THP-1 cells using a concentration range of 10-100 ng/mL.



SDS-PAGE analysis of recombinant mouse CCL2.

**Disclaimer :** For Research Use or Further Manufacturing Only.