

## Human IL-13, His Tag, E. coli

<b>Catalog Number</b>	LDG016PHE
<b>Package</b>	5 µg / 20 µg / 100 µg / Customized package

For full product information, images and publications, please visit [our website](#).



### Specifications

#### Species of Origin

Human

#### Expression System

Escherichia coli

#### Affinity Tag

His Tag (C-term)

#### Storage Buffer

Lyophilized from a 0.2 µm filtered solution of PBS, pH 8.0.

#### Purity

>95% as determined by SDS-PAGE analysis.

#### Molecular weight

The protein has a calculated MW of 13.28 kDa. The protein migrates as 15 kDa under reducing condition (SDS-PAGE analysis).

#### Activity

Measure by its ability to induce TF-1 cells proliferation. The ED<sub>50</sub> for this effect is <0.8 ng/mL. The specific activity of recombinant human IL-13 is approximately >1 x10<sup>6</sup> IU/ mg.

#### Endotoxin Level

<0.01 EU per 1 µg of the protein by the LAL method.

#### Form

Lyophilized

### Background

#### Tainan Headquarters

+886-6-2536677

bd@leadgene.com.tw

#### Innovation & Research Center

+886-2-27065528

#### CLD Center

+886-6-2536677

### Background

Interleukin 13 (IL-13) with a molecular mass of 10 kDa cytokine, it secreted by T helper type 2 (Th2) cells, CD4 cells, natural killer T cell, mast cells, basophils, eosinophils and nuocytes. It is homologous to IL-4 and shares many of its biologic activities on mononuclear phagocytic cells, endothelial cells, epithelial cells, and B cells.

### Uniprot ID

#P35225

### Synonyms

Interleukin-13, NC30

### Sequence Note

Gly35-Asn146

## Instruction

### Reconstitution

It is recommended to reconstitute the lyophilized protein in sterile H<sub>2</sub>O to a concentration of 200 µg/mL and incubate the stock solution for at least 20 min to ensure sufficient re-dissolved.

### Stability & Storage

This product is stable after storage at:

- -20°C for 12 months in lyophilized state from date of receipt.
- -20°C or -80°C for 2 weeks under sterile conditions after reconstitution.

Avoid repeated freeze/thaw cycles.

### Shipping

The product is shipped with polar packs. Upon receipt, store it immediately at -20°C or lower for long term storage.

## Image

### Tainan Headquarters

+886-6-2536677

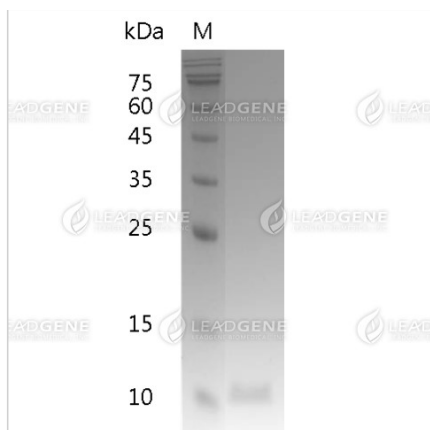
bd@leadgene.com.tw

### Innovation & Research Center

+886-2-27065528

### CLD Center

+886-6-2536677



SDS-PAGE analysis of recombinant human IL-13.

**Disclaimer :** For Research Use or Further Manufacturing Only.