

Swine IL-15, His Tag, E. coli

Catalog Number	LDG015PSE
Package	5 µg / 20 µg / 100 µg / Customized package

For full product information, images and publications, please visit [our website](#).



Specifications

Species of Origin

Swine

Affinity Tag

His Tag (N-term)

Purity

>95% as determined by SDS-PAGE analysis.

Activity

Measure by its ability to induce proliferation in TF-1 cells.

The ED₅₀ for this effect is <5.5 ng/mL.

Form

Lyophilized

Expression System

Escherichia coli

Storage Buffer

Lyophilized from a 0.2 µm filtered solution of PBS, pH 7.4.

Molecular weight

The protein has a calculated MW of 14.06 kDa.

The protein migrates as 11-17 kDa under reducing condition (SDS-PAGE analysis).

Endotoxin Level

<0.01 EU per 1 µg of the protein by the LAL method.

Background

Tainan Headquarters

+886-6-2536677

bd@leadgene.com.tw

Innovation & Research Center

+886-2-27065528

CLD Center

+886-6-2536677

Background

Interleukin 15 (IL-15) is a 12.65 kDa cytokine with 114 amino acid residues and is primarily produced from mononuclear phagocytes like dendritic cells, monocytes, and macrophages. IL-15 plays a critical role in the innate immune system when IL-15 binds to the IL-15 receptor. In addition, IL-15 mediates biological functions, such as the proliferation of natural killer cells and T cells, preventing the immune cells from apoptosis by activating STAT3 /JAK and PI3K/ALT signaling pathways.

Uniprot ID

#Q95253

Synonyms

Interleukin-15, IL-15

Sequence Note

Thr49-Ser162

Instruction

Reconstitution

It is recommended to reconstitute the lyophilized protein in sterile H₂O to a concentration not less than 200 µg/mL and incubate the stock solution for at least 20 min to ensure sufficient re-dissolved.

Stability & Storage

This product is stable after storage at:

- -20°C for 12 months in lyophilized state from date of receipt.
- -20°C or -80°C for 1 month under sterile conditions after reconstitution.

Avoid repeated freeze/thaw cycles.

Shipping

The product is shipped with polar packs. Upon receipt, store it immediately at -20°C or lower for long term storage.

Image

Tainan Headquarters

+886-6-2536677

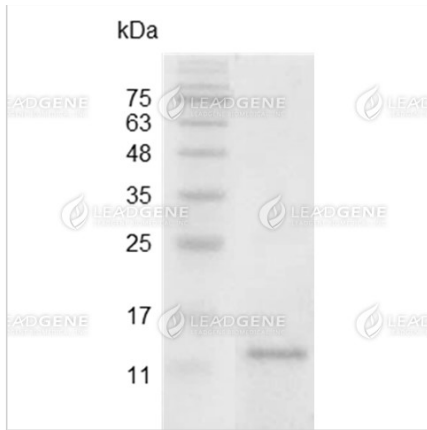
✉ bd@leadgene.com.tw

Innovation & Research Center

+886-2-27065528

CLD Center

+886-6-2536677



SDS-PAGE analysis of recombinant swine IL-15.

Disclaimer : For Research Use or Further Manufacturing Only.