

Mouse CXCL16, His Tag, E. coli

Catalog Number	LDG015PME
Package	5 µg / 20 µg / 100 µg / Customized package

For full product information, images and publications, please visit [our website](#).



Specifications

Species of Origin

Mouse

Affinity Tag

His Tag (N-term)

Purity

>98% as determined by SDS-PAGE analysis.

Activity

Measure by its ability to chemoattract human THP1 cells using a concentration range of 100-200 ng/mL.

Form

Lyophilized

Expression System

Escherichia coli

Storage Buffer

Lyophilized from a 0.2 µm filtered solution of PBS, pH 7.4.

Molecular weight

The protein has a calculated MW of 10.74 kDa. The protein migrates as 11-17 kDa under reducing condition (SDS-PAGE analysis).

Endotoxin Level

<0.1 EU per 1 µg of the protein by the LAL method.

Background

Tainan Headquarters

+886-6-2536677

bd@leadgene.com.tw

Innovation & Research Center

+886-2-27065528

CLD Center

+886-6-2536677

Background

C-X-C motif chemokine 16 (CXCL16) is a chemokine of the intercrine alpha family which is a 9.8 kDa protein containing 88 amino acid residues. In mediate the innate immunity, CXCL16 is a chemotaxis for T cells and NKT cells, which expressed the CXC chemokine receptor (CXCR) 6. CXCL16 also can be enhanced the expression level by the TNF α , IL-1 and IFN γ . CXCL16 protects the host by against the gram positive and gram negative bacteria.

Uniprot ID

#Q8BSU2

Synonyms

C-X-C motif chemokine 16, Scavenger receptor for phosphatidylserine and oxidized low density lipoprotein, SR-PSOX, Small-inducible cytokine B16, Transmembrane chemokine CXCL16

Sequence Note

Asn27-Pro114

Instruction

Reconstitution

It is recommended to reconstitute the lyophilized protein in sterile H₂O to a concentration not less than 200 μ g/mL and incubate the stock solution for at least 20 min to ensure sufficient re-dissolved.

Stability & Storage

This product is stable after storage at:

- -20°C for 12 months in lyophilized state from date of receipt.
- -20°C or -80°C for 1 month under sterile conditions after reconstitution.

Avoid repeated freeze/thaw cycles.

Shipping

The product is shipped with polar packs. Upon receipt, store it immediately at -20°C or lower for long term storage.

Image

Tainan Headquarters

+886-6-2536677

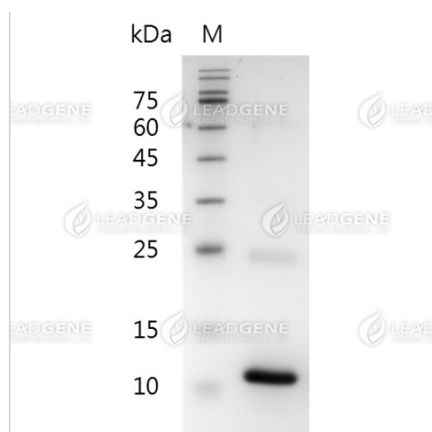
bd@leadgene.com.tw

Innovation & Research Center

+886-2-27065528

CLD Center

+886-6-2536677



SDS-PAGE analysis of recombinant mouse CXCL16.

Disclaimer : For Research Use or Further Manufacturing Only.