

## Human IL-12 (p40), His Tag, E. coli

<b>Catalog Number</b>	LDG015PHE
<b>Package</b>	5 µg / 20 µg / 100 µg / Customized package

For full product information, images and publications, please visit [our website](#).



### Specifications

#### Species of Origin

Human

#### Expression System

Escherichia coli

#### Affinity Tag

His Tag (C-term)

#### Storage Buffer

Lyophilized from a 0.2 µm filtered solution of PBS, pH 8.0.

#### Purity

>98% as determined by SDS-PAGE analysis.

#### Molecular weight

The protein has a calculated MW of 35.64 kDa. The protein migrates as 45 kDa under reducing condition (SDS-PAGE analysis).

#### Activity

Measure by its ability to induce cell proliferation in PHA-activated human peripheral blood lymphocytes (PBMC) using a concentration range of 5-50 ng/mL. Note: Results may vary from different PBMC donors.

#### Endotoxin Level

<0.1 EU per 1 µg of the protein by the LAL method.

#### Form

Lyophilized

### Background

#### Tainan Headquarters

+886-6-2536677

bd@leadgene.com.tw

#### Innovation & Research Center

+886-2-27065528

#### CLD Center

+886-6-2536677

### Background

Interleukin 12 (IL-12) is a pro-inflammatory cytokine with a molecular weight of 70 kDa composed of two subunits, IL-12p35 (35 kDa) and IL-12p40 (40 kDa). IL-12p40 is induced in excess over the other subunits of IL-12 and IL-23 and can exist in a monomeric or homodimer form.

### Uniprot ID

#P29460

### Synonyms

Interleukin-12 subunit beta, Cytotoxic lymphocyte maturation factor 40 kDa subunit, CLMF p40, IL-12 subunit p40, NK cell stimulatory factor chain 2, NKSF2

### Sequence Note

Ile23-Ser328

## Instruction

### Reconstitution

It is recommended to reconstitute the lyophilized protein in sterile H<sub>2</sub>O to a concentration of 200 µg/mL and incubate the stock solution for at least 20 min to ensure sufficient re-dissolved.

### Stability & Storage

This product is stable after storage at:

- -20°C for 12 months in lyophilized state from date of receipt.
- -20°C or -80°C for 1 month under sterile conditions after reconstitution.

Avoid repeated freeze/thaw cycles.

### Shipping

The product is shipped with polar packs. Upon receipt, store it immediately at -20°C or lower for long term storage.

## Image

### Tainan Headquarters

+886-6-2536677

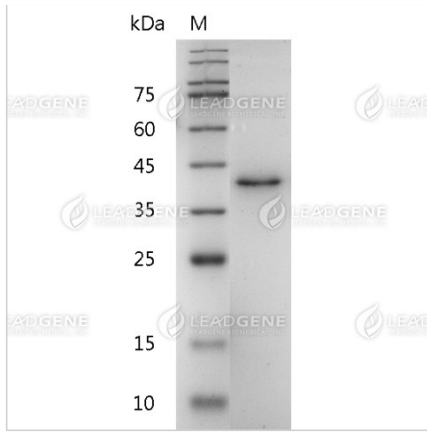
bd@leadgene.com.tw

### Innovation & Research Center

+886-2-27065528

### CLD Center

+886-6-2536677



SDS-PAGE analysis of recombinant human IL-12 (p40).

**Disclaimer :** For Research Use or Further Manufacturing Only.