

Human CD28 ECD, His-SUMO Tag, HEK293

Catalog Number LDG014PHM

Package 5 µg / 20 µg / 100 µg / Customized package

For full product information, images and publications, please visit [our website](#).



Specifications

Species of Origin

Human

Affinity Tag

His-SUMO Tag (N-term)

Purity

>95% as determined by SDS-PAGE analysis.

Endotoxin Level

<1 EU per 1 µg of the protein by the LAL method.

Expression System

HEK293 cell

Storage Buffer

Lyophilized from a 0.2 µm filtered solution of PBS, pH 7.4.

Molecular weight

The protein has a calculated MW of 28.61 kDa. The protein migrates as 48-62 kDa under reducing condition (SDS-PAGE analysis).

Form

Lyophilized

Background

Tainan Headquarter

+886-6-2536677 +886-6-2531536

info@leadgene.com.tw

Taipei Office

+886-2-27065528

Background

CD28, a well-known costimulatory receptor expressed on T cells, is a type I transmembrane glycoprotein of the Ig superfamily. When the T cells receive the first signal delivered by APCs (antigen-presenting cells), it initiates signaling cascades, which favor T cell survival and proliferation. It has been demonstrated that patients with lung cancer who responded to PD-1 therapy had more CD28+ T cells, suggesting that CD28 may predict treatment response.

Uniprot ID

P10747

Synonyms

TP44

Sequence Note

Asn19-Pro152

Instruction

Reconstitution

It is recommended to reconstitute the lyophilized protein in sterile H₂O to a concentration not less than 200 µg/mL and incubate the stock solution for at least 20 min to ensure sufficient re-dissolved.

Stability & Storage

This product is stable after storage at:

- -20°C for 12 months in lyophilized state from date of receipt.
- -20°C or -80°C for 1 month under sterile conditions after reconstitution.

Avoid repeated freeze/thaw cycles.

Shipping

The product is shipped with polar packs. Upon receipt, store it immediately at -20°C or lower for long term storage.

Image

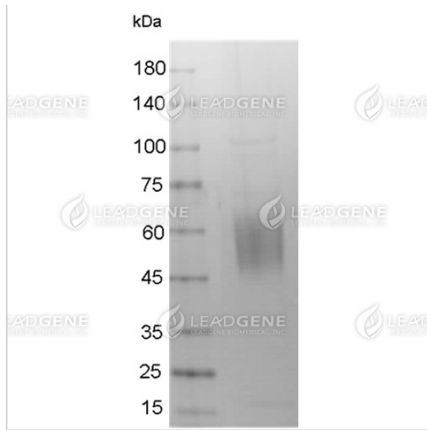
Tainan Headquarter

+886-6-2536677 +886-6-2531536

info@leadgene.com.tw

Taipei Office

+886-2-27065528



SDS-PAGE analysis of Human
CD28 ECD.

Disclaimer : For Research Use or Further Manufacturing Only.

Tainan Headquarter

+886-6-2536677 +886-6-2531536

info@leadgene.com.tw

Taipei Office

+886-2-27065528