

## Human IL-12 (p35), His Tag, E. coli

<b>Catalog Number</b>	LDG014PHE
<b>Package</b>	5 µg / 20 µg / 100 µg / Customized package

For full product information, images and publications, please visit [our website](#).



### Specifications

#### Species of Origin

Human

#### Affinity Tag

His Tag (C-term)

#### Purity

>95% as determined by SDS-PAGE analysis.

#### Activity

Measured in a cell proliferation assay using PHA-activated human peripheral blood lymphocytes (PBMC). The ED<sub>50</sub> for this effect is <49 pg/mL.

#### Form

Lyophilized

#### Expression System

Escherichia coli

#### Storage Buffer

Lyophilized from a 0.2 µm filtered solution of PBS, pH 8.0.

#### Molecular weight

The protein has a calculated MW of 23.48 kDa. The protein migrates as 28 kDa under reducing condition (SDS-PAGE analysis).

#### Endotoxin Level

<0.1 EU per 1 µg of the protein by the LAL method.

### Background

#### Tainan Headquarters

+886-6-2536677

bd@leadgene.com.tw

#### Innovation & Research Center

+886-2-27065528

#### CLD Center

+886-6-2536677

### Background

Interleukin 12 (IL-12) is a pro-inflammatory cytokine with a molecular weight of 70 kDa composed of two subunits, IL-12p35 (35 kDa) and IL-12p40 (40 kDa), and IL-12p35 as a p35-p35 homodimer with 57 kDa molecular weight and a p35 monomer of 27 kDa molecular weight. The p35 molecule is unique to IL-12, while p40 is shared by both IL-12 and IL-23. IL-12 promotes Th1 T cell responses, while IL-23 promotes Th17 T cell responses.

### Uniprot ID

#P29459

### Synonyms

Interleukin-12 subunit alpha, Cytotoxic lymphocyte maturation factor 35 kDa subunit, CLMF p35, IL-12 subunit p35, NK cell stimulatory factor chain 1, NKSF1

### Sequence Note

Arg23-Ser219

## Instruction

### Reconstitution

It is recommended to reconstitute the lyophilized protein in sterile H<sub>2</sub>O to a concentration not less than 200 µg/mL and incubate the stock solution for at least 20 min to ensure sufficient re-dissolved.

### Stability & Storage

This product is stable after storage at:

- -20°C for 12 months in lyophilized state from date of receipt.
- -20°C or -80°C for 1 month under sterile conditions after reconstitution.

Avoid repeated freeze/thaw cycles.

### Shipping

The product is shipped with polar packs. Upon receipt, store it immediately at -20°C or lower for long term storage.

## Image

### Tainan Headquarters

+886-6-2536677

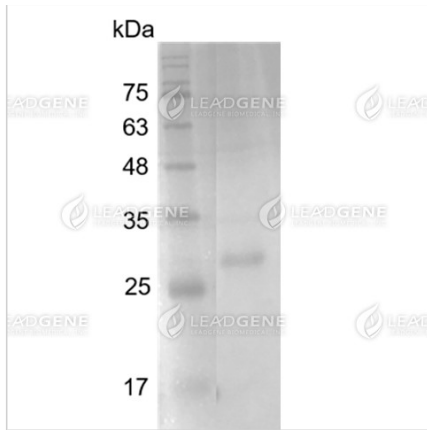
✉ [bd@leadgene.com.tw](mailto:bd@leadgene.com.tw)

### Innovation & Research Center

+886-2-27065528

### CLD Center

+886-6-2536677



SDS-PAGE analysis of recombinant  
human IL-12 p35.

**Disclaimer :** For Research Use or Further Manufacturing Only.