

Anti-Human Red Blood Cell Antibody

Catalog Number	LDG0140YA
Package	per mg / Customized package

For full product information, images and publications, please visit [our website](#).



Overview

Description

Human anti-Human Red Blood Cell Antibody recognize to Red Blood Cells (RBC)

Product Note

Recommended dilution factor:
ELISA: 1:5000-20000

Note: Working dilution for specific application should be determined by the investigator to obtain the best conditions.

Specifications

Clonality

Recombinant Human IgG

Isotype

IgG1

Clone Name

Human IgG

Reactivity

Human

Application

ELISA, CLIA, LFIA

Conjugation

Unconjugated

Concentration

2 mg/mL

Storage Buffer

Phosphate Buffered Saline containing 0.1% ProClin 300, pH 7.4.

Tainan Headquarters

+886-6-2536677

bd@leadgene.com.tw

Innovation & Research Center

+886-2-27065528

CLD Center

+886-6-2536677

Specificity

Red Blood Cells (RBC)

Form

Liquid

Instruction**Shipping**

The product is shipped with polar packs. Upon receipt, store it immediately at -20°C or lower for long term storage.



Stability & Storage

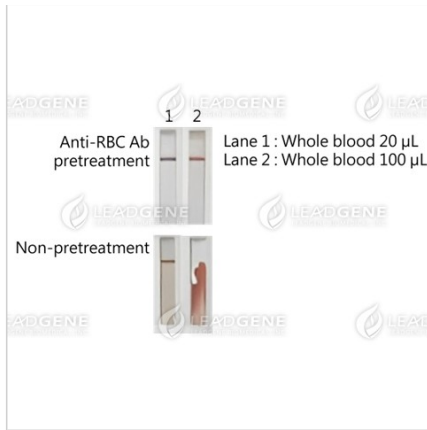
This product is stable after storage at:

- 2-8°C for 2 weeks under sterile conditions from date of receipt.
- -20°C or -80°C for 12 months under sterile conditions from date of receipt.

Avoid repeated freeze/thaw cycles.

Suggestion: Divide antibody into several vials. Keep only vials for usage at 2-8°C.

Image**Tainan Headquarters** +886-6-2536677 bd@leadgene.com.tw**Innovation & Research Center** +886-2-27065528**CLD Center** +886-6-2536677



Background interference observed in rapid tests run with different volumes of whole blood samples, comparing conditions with and without pretreatment using Anti-Human Red Blood Cell Antibody (Anti-RBC Ab). A significant reduction in background interference is observed in rapid test strips pretreated with Anti-Human Red Blood Cell Antibody when used to test whole blood samples, in contrast to non-pretreated strips.

Disclaimer : For Research Use or Further Manufacturing Only.