

Swine IL-8, His Tag, E. coli

Catalog Number	LDG013PSE
Package	5 µg / 20 µg / 100 µg / Customized package

For full product information, images and publications, please visit [our website](#).



Specifications

Species of Origin

Swine

Affinity Tag

His Tag (C-term)

Purity

>98% as determined by SDS-PAGE analysis.

Activity

Measure by its ability to chemoattract BaF3 cells transfected with human CXCR2. The ED₅₀ for this effect is <5 ng/mL.

Form

Lyophilized

Expression System

Escherichia coli

Storage Buffer

Lyophilized from a 0.2 µm filtered solution of PBS, pH 7.4.

Molecular weight

The protein has a calculated MW of 10.04 kDa. The protein migrates about 11 kDa under reducing condition (SDS-PAGE analysis).

Endotoxin Level

<0.1 EU per 1 µg of the protein by the LAL method.

Background

Tainan Headquarters

+886-6-2536677

bd@leadgene.com.tw

Innovation & Research Center

+886-2-27065528

CLD Center

+886-6-2536677

Background

This recombinant protein is the major form secreted by macrophages. IL-8 is a chemokine produced by macrophages and other cell types such as epithelial cells, airway smooth muscle cells and endothelial cells.

Uniprot ID

#P26894

Synonyms

Interleukin-8, IL-8, Alveolar macrophage chemotactic factor I, AMCF-I, C-X-C motif chemokine 8, Chemokine, C-X-C motif ligand 8

Sequence Note

Ala26-Gln103

Instruction**Reconstitution**

It is recommended to reconstitute the lyophilized protein in sterile H₂O to a concentration not less than 200 µg/mL and incubate the stock solution for at least 20 min to ensure sufficient re-dissolved.

Stability & Storage

This product is stable after storage at:

- -20°C for 12 months in lyophilized state from date of receipt.
- -20°C or -80°C for 1 month under sterile conditions after reconstitution.

Avoid repeated freeze/thaw cycles.

Shipping

The product is shipped with polar packs. Upon receipt, store it immediately at -20°C or lower for long term storage.

Image**Tainan Headquarters**

+886-6-2536677

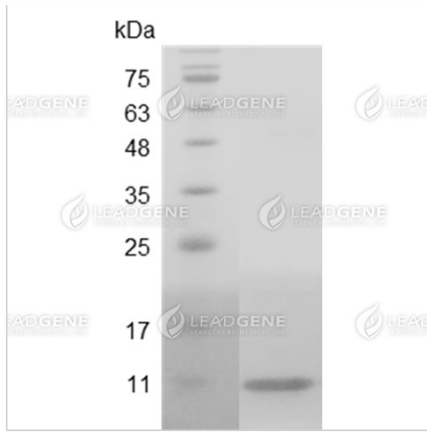
✉ bd@leadgene.com.tw

Innovation & Research Center

+886-2-27065528

CLD Center

+886-6-2536677



SDS-PAGE analysis of recombinant swine IL-8.

Disclaimer : For Research Use or Further Manufacturing Only.