

## Swine IL-4, His Tag, E. coli

Catalog Number	LDG011PSE
Package	5 µg / 20 µg / 100 µg / Customized package

For full product information, images and publications, please visit [our website](#).



### Specifications

#### Species of Origin

Swine

#### Affinity Tag

His Tag (C-term)

#### Purity

>98% as determined by SDS-PAGE analysis.

#### Activity

Measure by its ability to induce proliferation in TF-1 cells. The ED<sub>50</sub> for this effect is <0.6 ng/mL.

#### Form

Lyophilized

#### Expression System

Escherichia coli

#### Storage Buffer

Lyophilized from a 0.2 µm filtered solution of PBS, pH 7.4.

#### Molecular weight

The protein has a calculated MW of 13.5 kDa. The protein migrates as 15 kDa under reducing condition (SDS-PAGE analysis).

#### Endotoxin Level

<0.1 EU per 1 µg of the protein by the LAL method.

### Background

#### Tainan Headquarters

+886-6-2536677

bd@leadgene.com.tw

#### Innovation & Research Center

+886-2-27065528

#### CLD Center

+886-6-2536677

### Background

Interleukin-4 (IL-4) is a key cytokine produced by activated T cells, mast cells, basophils, neutrophils and eosinophils. IL-4 is critical for the development of Th2-mediated responses, which is related to allergy and asthma. It can also regulate B cell responses, including survival, cell proliferation and gene expression. IL-4 also plays fundamental role for B-cell stimulation, including induction of the IgE isotype switch.

### Uniprot ID

#Q04745

### Synonyms

Interleukin-4, B-cell stimulatory factor 1, BSF-1, Lymphocyte stimulatory factor 1

### Sequence Note

His25-Cys133

## Instruction

### Reconstitution

It is recommended to reconstitute the lyophilized protein in sterile H<sub>2</sub>O to a concentration not less than 200 µg/mL and incubate the stock solution for at least 20 min to ensure sufficient re-dissolved.

### Stability & Storage

This product is stable after storage at:

- -20°C for 12 months in lyophilized state from date of receipt.
- -20°C or -80°C for 1 month under sterile conditions after reconstitution.

Avoid repeated freeze/thaw cycles.

### Shipping

The product is shipped with polar packs. Upon receipt, store it immediately at -20°C or lower for long term storage.

## Image

### Tainan Headquarters

+886-6-2536677

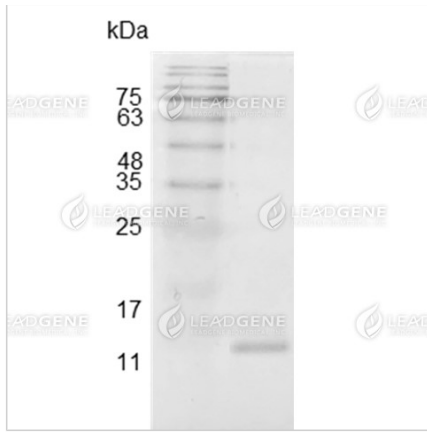
bd@leadgene.com.tw

### Innovation & Research Center

+886-2-27065528

### CLD Center

+886-6-2536677



SDS-PAGE analysis of recombinant swine IL-4.

**Disclaimer :** For Research Use or Further Manufacturing Only.