

## Anti- $\beta$ -amyloid Antibody [Clone 85-1]

Catalog Number	LDG0103YA
Package	100 $\mu$ g / Customized package

For full product information, images and publications, please visit [our website](#).



### Overview

#### Description

Beta-amyloid ( $A\beta$ ) is one of the intrinsically disordered proteins (IDPs) involved in Alzheimer's disease (AD) pathogenesis. This peptide derives from the sequential cleavage of a transmembrane glycoprotein, amyloid precursor protein (APP), by beta secretase and gamma secretase. The abnormal metabolism of APP result in excessive accumulation of  $A\beta$ , and triggers neurofibrillary tangles, oxidative stress, microglial activation, synaptic dysfunction, synaptic loss and the inflammatory response.

#### Product Note

Recommended dilution factor:

ELISA: 1:5000-20000

WB:1: 1000-5000

Note: Working dilution for specific application should be determined by the investigator to obtain the best conditions.

### Specifications

#### Host

Mouse

#### Clonality

Monoclonal

#### Isotype

IgG2a

#### Clone Name

clone 85-1

#### Immunogen

Human beta-amyloid 1-42

#### Reactivity

Human

#### Tainan Headquarters

+886-6-2536677

bd@leadgene.com.tw

#### Innovation & Research Center

+886-2-27065528

#### CLD Center

+886-6-2536677

**Application**

ELISA, WB

**Conjugation**

Unconjugated

**Concentration**

1 mg/mL

**Storage Buffer**

Phosphate Buffered Saline containing 0.01% thimerosal, pH 7.4.

**Specificity**

Beta Amyloid (1-42)

**Form**

Liquid

**Instruction****Shipping**

The product is shipped with polar packs. Upon receipt, store it immediately at -20°C or lower for long term storage.

**Stability & Storage**

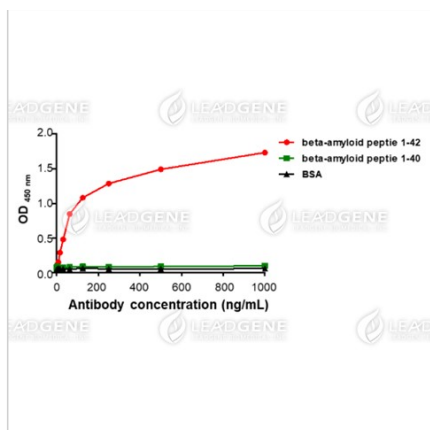
This product is stable after storage at:

- 2-8°C for 2 weeks under sterile conditions from date of receipt.
- -20°C or -80°C for 12 months under sterile conditions from date of receipt.

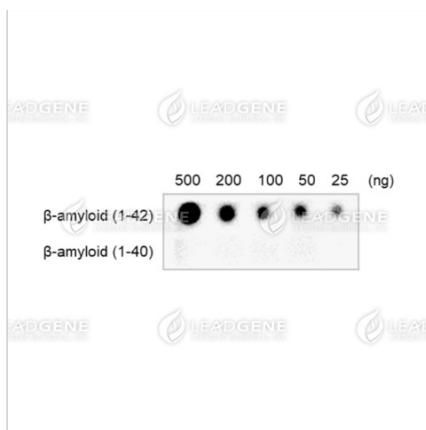
Avoid repeated freeze/thaw cycles.

Suggestion: Divide antibody into several vials. Keep only vials for usage at 2-8°C.

**Image****Tainan Headquarters** +886-6-2536677 [bd@leadgene.com.tw](mailto:bd@leadgene.com.tw)**Innovation & Research Center** +886-2-27065528**CLD Center** +886-6-2536677



ELISA titration of Anti-β-amyloid (1-42)  
Antibody [clone 85-1]



Dot blot analysis of Anti-β-amyloid (1-42)  
Antibody [clone 85-1].

**Disclaimer :** For Research Use or Further Manufacturing Only.