

## LeadGMP® Human IL-15 Protein, His Tag, E. coli

**Catalog Number** LDG009PHE-GMP

**Package** 100 µg / 1 mg / Customized package

For full product information, images and publications, please visit [our website](#).



### Specifications

#### Species of Origin

Human

#### Affinity Tag

His Tag (N-term)

#### Purity

>97% as determined by SDS-PAGE analysis.

#### Activity

Measure by its ability to induce proliferation in CTLL-2 cells. The ED<sub>50</sub> for this effect is < 3 ng/mL. The specific activity of recombinant LeadGMP® human IL-15 is > 2 x 10<sup>6</sup> IU/mg, which is calibrated against the human IL-15 WHO International Standard (NIBSC code: 95/554).

#### Mycoplasma

Not detected

#### Expression System

Escherichia coli

#### Storage Buffer

Lyophilized from a 0.2 µm filtered solution of NaPi buffer, 0.018% SDS, pH 7.5.

#### Molecular weight

The protein has a calculated MW of 13.7 kDa. The protein migrates as 13 kDa under reducing condition (SDS-PAGE analysis).

#### Endotoxin Level

<0.05 EU per 1 µg of the protein by the LAL method.

#### Form

Lyophilized

### Background

#### Tainan Headquarter

+886-6-2536677 +886-6-2531536

info@leadgene.com.tw

#### Taipei Office

+886-2-27065528

### Background

Interleukin-15 (IL-15) is a 14-15 kDa glycoprotein with immune regulatory functions in many diverse cell types. IL-15 can be constitutively expressed in a variety of cell types stored as intracellular protein in the cytoplasm as well as transport to the cell surface, while only secreted from some cell types including monocytes, dendritic cells, epithelial cells, bone marrow stromal cells, and fibroblasts. As a pleiotropic cytokine, IL-15 mediates the crosstalk between innate immunity and adaptive immunity whose principal role is to kill virally infected cells. IL-15 plays a crucial role in the development, differentiation, and survival of NK cells. In monocytes, IL-15 induces the production of IL-8 and monocyte chemoattractant protein 1 (MCP-1), which recruits neutrophils and monocytes to sites of infection. IL-15 can also act as a chemo-attractant in T lymphocytes and regulate the differentiation of T lymphocytes.

### Uniprot ID

P40933

### Synonyms

Interleukin-15

### Sequence Note

Asn49-Ser162

## Instruction

### Reconstitution

It is recommended to reconstitute the lyophilized protein in sterile H<sub>2</sub>O to a concentration not less than 0.5 mg/mL and incubate the stock solution for at least 20 min to ensure sufficient re-dissolved.

### Shipping

The product is shipped with polar packs. Upon receipt, store it immediately at -20°C or lower for long term storage.

### Tainan Headquarter

☎ +886-6-2536677 📠 +886-6-2531536

✉ [info@leadgene.com.tw](mailto:info@leadgene.com.tw)

### Taipei Office

☎ +886-2-27065528

### Stability & Storage

This product is stable after storage at:

- -20°C for 12 months in lyophilized state from date of receipt.
- -20°C or -80°C for 1 month under sterile conditions after reconstitution.

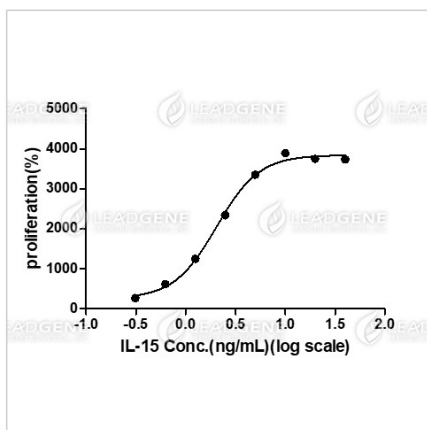
Avoid repeated freeze/thaw cycles.

### Manufacturing Specifications

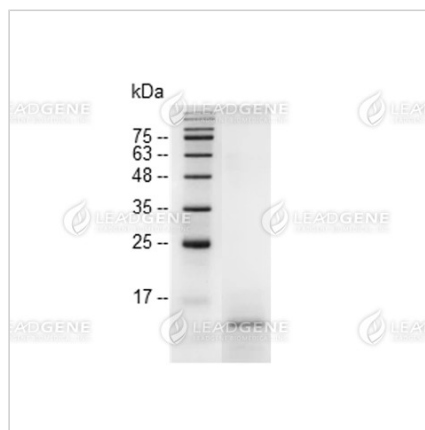
LeadGMP® recombinant proteins are manufactured in ISO 13485:2016 and GMP certified facility. The processes include:

- Animal-free reagent and laboratory
- Manufactured and tested under GMP guideline
- Testing and traceability of raw material
- Records of the maintenance and equipment calibration
- Personnel training records
- Batch-to-batch consistency
- Documentation of QA control and process changes
- Manufactured and tested under an ISO 13485:2016 certified quality management system
- Stability monitor of product shelf-life

## Image



LeadGMP® Human IL-15 Protein, His Tag, E. coli (LDG009PHE-GMP) induces CTLL-2 cell proliferation, with the ED50 <3 ng/mL.



SDS-PAGE analysis of LeadGMP® IL-15, Human

### Tainan Headquarter

+886-6-2536677 +886-6-2531536

info@leadgene.com.tw

### Taipei Office

+886-2-27065528

**Disclaimer :** For Research Use or Further Manufacturing Only.

**Tainan Headquarter**

+886-6-2536677 +886-6-2531536

info@leadgene.com.tw

**Taipei Office**

+886-2-27065528