

## Anti-Influenza A Virus NP Antibody [Clone LGA7]

<b>Catalog Number</b>	LDG0090YA
<b>Package</b>	100 µg / Customized package

For full product information, images and publications, please visit [our website](#).



### Overview

#### Description

Human anti-influenza A virus NP antibody only recognizes nucleocapsid protein (NP) of influenza A viruses but not influenza B viruses. Influenza A viruses are RNA viruses and their subtypes are labeled according to an H number (for the type of hemagglutinin) and an N number (for the type of neuraminidase).

#### Product Note

Recognize influenza A viruses NP in Lateral Flow and ELISA, when recombinant antibody (LGA7) was paired with human anti-influenza A virus NP antibody, clone LGA4 (cat. LDG0089YA).

Recommended dilution factor:

ELISA: 1:5000-20000

IFA:1: 500-1000

FACS: Assay dependent

Note: Working dilution for specific application should be determined by the investigator to obtain the best conditions.

### Specifications

#### Clonality

Recombinant Human IgG

#### Isotype

IgG1

#### Clone Name

clone LGA7

#### Reactivity

Influenza A virus

#### Application

ELISA, IFA, LFIA

#### Conjugation

Unconjugated

#### Tainan Headquarters

+886-6-2536677

bd@leadgene.com.tw

#### Innovation & Research Center

+886-2-27065528

#### CLD Center

+886-6-2536677

**Concentration**

1 mg/mL

**Specificity**

Nucleocapsid protein

**Storage Buffer**

Phosphate Buffered Saline containing 0.03% ProClin 300, pH 7.4.

**Form**

Liquid

**Instruction**
**Shipping**

The product is shipped with polar packs. Upon receipt, store it immediately at -20°C or lower for long term storage.

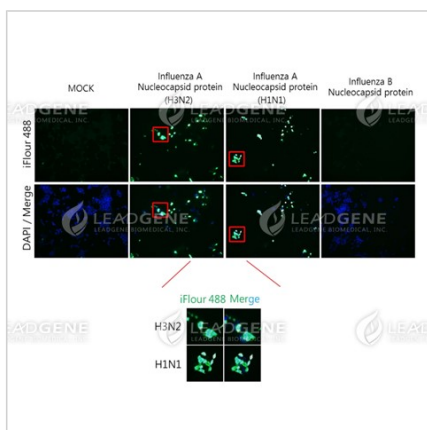
**Stability & Storage**

This product is stable after storage at:


- 2-8°C for 2 weeks under sterile conditions from date of receipt.
- -20°C or -80°C for 12 months under sterile conditions from date of receipt.

Avoid repeated freeze/thaw cycles.


Suggestion: Divide antibody into several vials. Keep only vials for usage at 2-8°C.

**Image**


Immunofluorescence analysis of  
 Human anti-Influenza A virus NP  
 Antibody (clone LGA7) (1:500)

**Tainan Headquarters**
 +886-6-2536677

 bd@leadgene.com.tw

**Innovation & Research Center**
 +886-2-27065528

**CLD Center**
 +886-6-2536677

**Disclaimer :** For Research Use or Further Manufacturing Only.

---

**Tainan Headquarters**

☎ +886-6-2536677

✉ [bd@leadgene.com.tw](mailto:bd@leadgene.com.tw)

---

**Innovation & Research Center**

☎ +886-2-27065528

---

**CLD Center**

☎ +886-6-2536677