

Swine IL-1 Alpha, His Tag, E. coli

Catalog Number	LDG008PSE
Package	5 µg / 20 µg / 100 µg / Customized package

For full product information, images and publications, please visit [our website](#).



Specifications

Species of Origin

Swine

Expression System

Escherichia coli

Affinity Tag

His Tag (C-term)

Storage Buffer

Lyophilized from a 0.2 µm filtered solution of PBS, pH 7.4.

Purity

>98% as determined by SDS-PAGE analysis.

Molecular weight

The protein has a calculated MW of 19.02 kDa. The protein migrates as 17-25 kDa under reducing condition (SDS-PAGE analysis).

Activity

Measure by its ability to induce D10.G4.1 cells proliferation. The ED₅₀ for this effect is <50 pg/mL

Endotoxin Level

<0.1 EU per 1 µg of the protein by the LAL method.

Form

Lyophilized

Background

Tainan Headquarters

+886-6-2536677

bd@leadgene.com.tw

Innovation & Research Center

+886-2-27065528

CLD Center

+886-6-2536677

Background

Interleukin 1-alpha (IL-1 α), also named hematopoietin 1, is a 17.65 kDa cytokine with 159 amino acid residues. IL-1 α is mainly expressed in macrophages, neutrophils, epithelial cells, and endothelial cells. When IL-1 α binds to the IL-1 receptor, It mediates a wide variety of biological processes such as cell division, angiogenesis, production of interleukin-2, and cellular sodium ion homeostasis. In addition, IL-1 α also plays a critical role in immune responses, such as fever and inflammation, and triggers tumor necrosis factor-alpha.

Uniprot ID

#P18430

Synonyms

Interleukin-1 alpha, IL-1 alpha

Sequence Note

Ser113-Ser270

Instruction

Reconstitution

It is recommended to reconstitute the lyophilized protein in sterile H₂O to a concentration of 200 μ g/mL and incubate the stock solution for at least 20 min to ensure sufficient re-dissolved.

Stability & Storage

This product is stable after storage at:

- -20°C for 12 months in lyophilized state from date of receipt.
- -20°C or -80°C for 1 month under sterile conditions after reconstitution.

Avoid repeated freeze/thaw cycles.

Shipping

The product is shipped with polar packs. Upon receipt, store it immediately at -20°C or lower for long term storage.

Image

Tainan Headquarters

+886-6-2536677

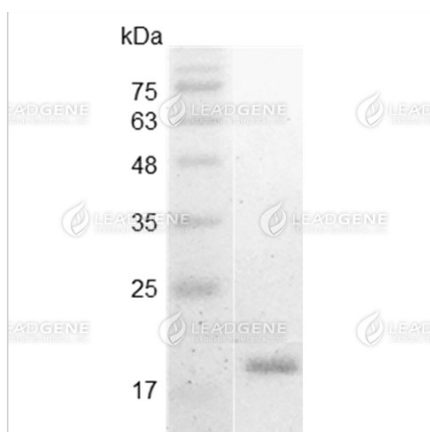
✉ bd@leadgene.com.tw

Innovation & Research Center

+886-2-27065528

CLD Center

+886-6-2536677



SDS-PAGE analysis of recombinant
swine IL-1 alpha.

Disclaimer : For Research Use or Further Manufacturing Only.