

## Feline CTLA-4, His Tag, HEK293

<b>Catalog Number</b>	LDG008POM
<b>Package</b>	100 µg / Customized package

For full product information, images and publications, please visit [our website](#).



### Overview

#### Description

CTLA-4 is a protein belonging to the immunoglobulin superfamily and the CD28 receptor family. It interacts with CD80 (B7-1) and CD86 (B7-2) to transmit inhibitory signals to T cells, in contrast to CD28, which sends stimulatory signals. This receptor is also found within regulatory T cells, where it plays a vital role in their functions. CTLA-4 is a key regulator of T cell activation, making it an appealing candidate for autoimmune disease therapy and cancer immunotherapy. Recent evidence further highlights its importance in the function and balance of regulatory T cells (Treg).

### Specifications

#### Species of Origin

Feline

#### Expression System

HEK293

#### Affinity Tag

His Tag (C-term)

#### Storage Buffer

Lyophilized from a 0.2 µm filtered solution of PBS, pH 7.4.

#### Purity

>90% as determined by SDS-PAGE analysis.

#### Molecular weight

The protein has a calculated MW of 14 kDa.  
The protein migrates as 18-23 kDa under reducing condition (SDS-PAGE analysis).

#### Endotoxin Level

<0.1 EU per 1 µg of the protein by the LAL method.

#### Form

Lyophilized

### Background

#### Tainan Headquarters

+886-6-2536677

bd@leadgene.com.tw

#### Innovation & Research Center

+886-2-27065528

#### CLD Center

+886-6-2536677

**Synonyms**

CD152

**Uniprot ID**

Q9XTA1

**Sequence Note**

Lys36-Asp161

**Instruction****Reconstitution**

It is recommended to reconstitute the lyophilized protein in sterile H<sub>2</sub>O to a concentration not less than 200 µg/mL and incubate the stock solution for at least 20 min to ensure sufficient re-dissolved.

**Stability & Storage**




This product is stable after storage at:

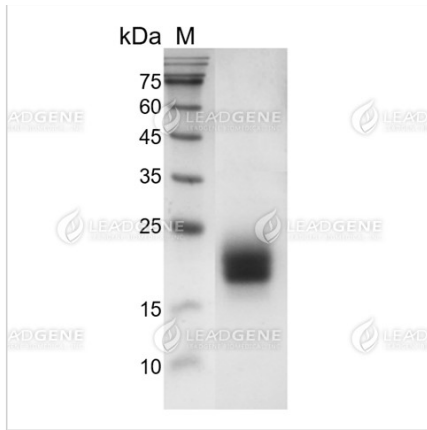
- -20°C for 12 months in lyophilized state from date of receipt.
- -20°C or -80°C for 1 month under sterile conditions after reconstitution.

Avoid repeated freeze/thaw cycles.

**Shipping**

The product is shipped with polar packs. Upon receipt, store it immediately at -20°C or lower for long term storage.

**Image****Tainan Headquarters** +886-6-2536677 bd@leadgene.com.tw**Innovation & Research Center** +886-2-27065528**CLD Center** +886-6-2536677



SDS-PAGE analysis of recombinant feline CTLA-4 protein.

**Disclaimer :** For Research Use or Further Manufacturing Only.