

LeadGMP® Human IL-10 Protein, His Tag, E. coli

Catalog Number LDG008PHE-GMP

Package 100 µg / 1 mg / Customized package

For full product information, images and publications, please visit [our website](#).



Specifications

Species of Origin

Human

Affinity Tag

His Tag (C-term)

Purity

>98% as determined by SDS-PAGE analysis.

Activity

Measure by its ability to induce MC/9-2 cells proliferation. The ED₅₀ for this effect is <1 ng/mL. The specific activity of recombinant human IL-10 is approximately >1 x10⁶ IU/ mg.

Mycoplasma

Not detected

Expression System

Escherichia coli

Storage Buffer

Lyophilized from a 0.2 µm filtered solution of PBS, pH 8.0.

Molecular weight

The protein has a calculated MW of 19.6 kDa. The protein migrates as 20 kDa under reducing condition (SDS-PAGE analysis).

Endotoxin Level

<0.05 EU per 1 µg of the protein by the LAL method.

Form

Lyophilized

Background

Tainan Headquarters

+886-6-2536677

bd@leadgene.com.tw

Innovation & Research Center

+886-2-27065528

CLD Center

+886-6-2536677

Background

Interleukin-10 (IL-10), also known as human cytokine synthesis inhibitory factor (CSIF), is an anti-inflammatory cytokine. Many different types of cells can produce IL-10, including immune cells and non-immune cells. IL-10 exerts inhibitory functions on DCs and macrophages, which is a potent inhibitor of antigen presentation and limit the production of the Th1-associated cytokines IL-2 and interferon- γ (IFN- γ). IL-10 is also a key immunoregulator during infection due to its inhibitory effect on inflammatory cytokine production. Consequently, the excessive Th1 and CD8+ T cell responses could be suppressed during infection.

Uniprot ID

P22301

Synonyms

Interleukin-10, Cytokine synthesis inhibitory factor , CSIF

Sequence Note

Ser19-Asn178

Instruction**Reconstitution**

It is recommended to reconstitute the lyophilized protein in sterile H₂O to a concentration not less than 0.5 mg/mL and incubate the stock solution for at least 20 min to ensure sufficient re-dissolved.

Shipping

The product is shipped with polar packs. Upon receipt, store it immediately at -20°C or lower for long term storage.

Stability & Storage

This product is stable after storage at:

- -20°C for 12 months in lyophilized state from date of receipt.
- -20°C or -80°C for 1 month under sterile conditions after reconstitution.

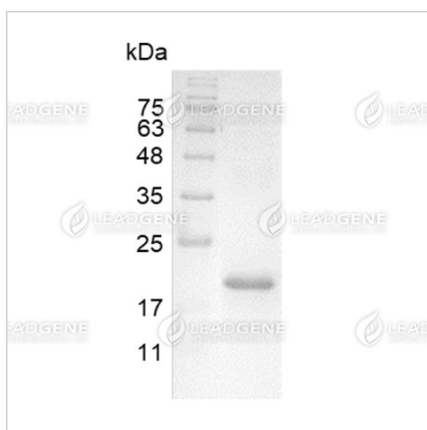
Avoid repeated freeze/thaw cycles.

Manufacturing Specifications

LeadGMP® recombinant proteins are manufactured in ISO 13485:2016 and GMP certified facility. The processes include:

- Animal-free reagent and laboratory
- Manufactured and tested under GMP guideline
- Testing and traceability of raw material
- Records of the maintenance and equipment calibration
- Personnel training records
- Batch-to-batch consistency
- Documentation of QA control and process changes
- Manufactured and tested under an ISO 13485:2016 certified quality management system
- Stability monitor of product shelf-life

Image



SDS-PAGE analysis of LeadGMP® IL-10, Human

Disclaimer : For Research Use or Further Manufacturing Only.

Tainan Headquarters

+886-6-2536677

bd@leadgene.com.tw

Innovation & Research Center

+886-2-27065528

CLD Center

+886-6-2536677