

Human IL-6, His Tag, E. coli

Catalog Number	LDG008PHE
Package	5 µg / 20 µg / 100 µg / Customized package

For full product information, images and publications, please visit [our website](#).



Specifications

Species of Origin

Human

Affinity Tag

His Tag (C-term)

Purity

>98% as determined by SDS-PAGE analysis.

Activity

Measure by its ability to induce proliferation in TF-1 cells. The ED₅₀ for this effect is < 0.5 ng/mL. The specific activity of recombinant human IL-6 is approximately >1 x 10⁸ IU/mg.

Form

Lyophilized

Expression System

Escherichia coli

Storage Buffer

Lyophilized from a 0.2 µm filtered solution of PBS, pH 8.0.

Molecular weight

The protein has a calculated MW of 21.8 kDa. The protein migrates as 22 kDa under reducing condition (SDS-PAGE analysis).

Endotoxin Level

<0.1 EU per 1 µg of the protein by the LAL method.

Background

Tainan Headquarters

+886-6-2536677

bd@leadgene.com.tw

Innovation & Research Center

+886-2-27065528

CLD Center

+886-6-2536677

Background

Interleukin-6 (IL-6) is a pleiotropic, 22-28 kDa cytokine which plays fundamental role in the acute phase response, inflammation, bone metabolism, lymphocyte differentiation and cancer progression. Deregulation of IL-6 production was also found in several diseases, including rheumatoid arthritis, Alzheimer's disease, autoimmune deficiency disease and different types of cancer.

Uniprot ID

#P05231

Synonyms

Interleukin-6, B-cell stimulatory factor 2 , BSF-2, CTL differentiation factor , CDF, Hybridoma Growth Factors, Interferon beta-2 , IFN-beta-2

Sequence Note

Val30-Met212

Instruction

Reconstitution

It is recommended to reconstitute the lyophilized protein in sterile H₂O to a concentration of 200 µg/mL and incubate the stock solution for at least 20 min to ensure sufficient re-dissolved.

Stability & Storage

This product is stable after storage at:

- -20°C for 12 months in lyophilized state from date of receipt.
- -20°C or -80°C for 1 month under sterile conditions after reconstitution.

Avoid repeated freeze/thaw cycles.

Shipping

The product is shipped with polar packs. Upon receipt, store it immediately at -20°C or lower for long term storage.

Image

Tainan Headquarters

+886-6-2536677

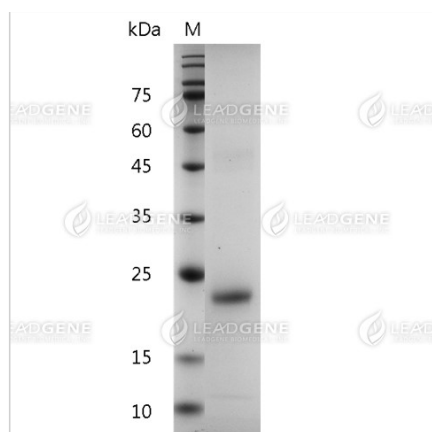
✉ bd@leadgene.com.tw

Innovation & Research Center

+886-2-27065528

CLD Center

+886-6-2536677



SDS-PAGE analysis of recombinant human IL-6.

Disclaimer : For Research Use or Further Manufacturing Only.