

Feline PD-L1, His Tag, HEK293

Catalog Number LDG007POM

Package 100 µg / Customized package

For full product information, images and publications, please visit [our website](#).



Overview

Description

PD-L1 regulates immune responses by binding to the immunoinhibitory receptor PD-1 on activated T-cells and B-cells. This interaction can suppress T-cell responses by inducing apoptosis and arresting cell-cycle progression. In cancer, PD-L1's role in reducing antigen-specific T cells can promote tumor growth and immune evasion. As a result, PD-L1 is considered as a potential therapeutic target for autoimmune diseases and cancer.

Specifications

Species of Origin

Feline

Expression System

HEK293 cell

Affinity Tag

His Tag (C-term)

Storage Buffer

Lyophilized from a 0.2 µm filtered solution of PBS, pH 7.4.

Purity

>90% as determined by SDS-PAGE analysis.

Molecular weight

The protein has a calculated MW of 26 kDa. The protein migrates as 35-45 kDa under reducing condition (SDS-PAGE analysis).

Endotoxin Level

<0.1 EU per 1 µg of the protein by the LAL method.

Form

Lyophilized

Background

Tainan Headquarter

+886-6-2536677 +886-6-2531536

info@leadgene.com.tw

Taipei Office

+886-2-27065528

Synonyms

CD274, B7-H1

Sequence Note

Phe19-Arg237

Uniprot ID

NCBI Reference Sequence: XP_006939101.1

Instruction**Reconstitution**

It is recommended to reconstitute the lyophilized protein in sterile H₂O to a concentration not less than 200 µg/mL and incubate the stock solution for at least 20 min to ensure sufficient re-dissolved.

Stability & Storage



This product is stable after storage at:

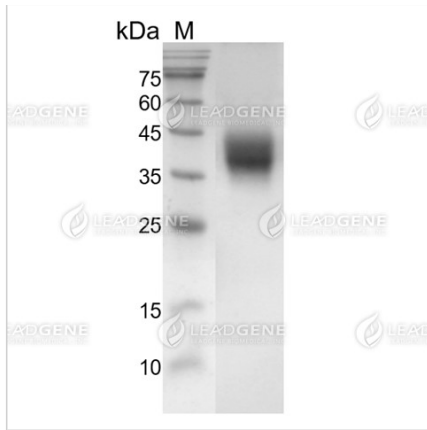
- -20°C for 12 months in lyophilized state from date of receipt.
- -20°C or -80°C for 1 month under sterile conditions after reconstitution.

Avoid repeated freeze/thaw cycles.

Shipping

The product is shipped with polar packs. Upon receipt, store it immediately at -20°C or lower for long term storage.

Image**Tainan Headquarter** +886-6-2536677  +886-6-2531536 info@leadgene.com.tw**Taipei Office** +886-2-27065528



SDS-PAGE analysis of
recombinant feline PD-L1 protein.

Disclaimer : For Research Use or Further Manufacturing Only.

Tainan Headquarter

+886-6-2536677 +886-6-2531536

info@leadgene.com.tw

Taipei Office

+886-2-27065528