

Anti-SARS-CoV & CoV-2 NP Antibody Set

Catalog Number	LDG0079YA
Package	20 µg / Customized package

For full product information, images and publications, please visit [our website](#).



Overview

Description

Human anti-SARS-CoV & CoV-2 NP antibody recognize human SARS Coronavirus Nucleocapsid protein (NP). Coronavirus NP localize to the cytoplasm and the nucleolus in both Virus-like particle (VLP) infected primary cells and in cells transfected with NP plasmid. NP has abundant expression in coronavirus and is a highly immunogenic phosphoprotein. NP is also conserved in sequence. Due to these characteristic above, the NP is an ideal marker for diagnosis.

Product Note

Recommended dilution factor:

ELISA: 1:5000-20000

WB: Assay dependent

IFA: Assay dependent

FACS: Assay dependent

Note: Working dilution for specific application should be determined by the investigator to obtain the best conditions.

Specifications

Clonality

Recombinant Human IgG

Isotype

IgG, IgA, IgM

Reactivity

SARS-CoV & CoV-2

Application

ELISA, WB, IFA

Conjugation

Unconjugated

Concentration

1 mg/mL

Tainan Headquarters

+886-6-2536677

bd@leadgene.com.tw

Innovation & Research Center

+886-2-27065528

CLD Center

+886-6-2536677

Storage Buffer

Phosphate Buffered Saline, pH 7.4.

Specificity

Nucleocapsid protein

Form

Liquid

Instruction
Shipping

The product is shipped with polar packs. Upon receipt, store it immediately at -20°C or lower for long term storage.

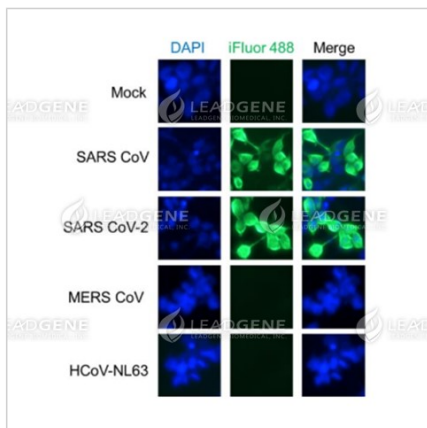
Stability & Storage

This product is stable after storage at:

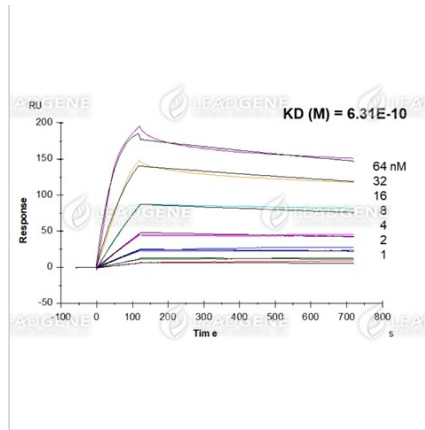
- 2-8°C for 2 weeks under sterile conditions from date of receipt.
- -20°C or -80°C for 12 months under sterile conditions from date of receipt.

Avoid repeated freeze/thaw cycles.

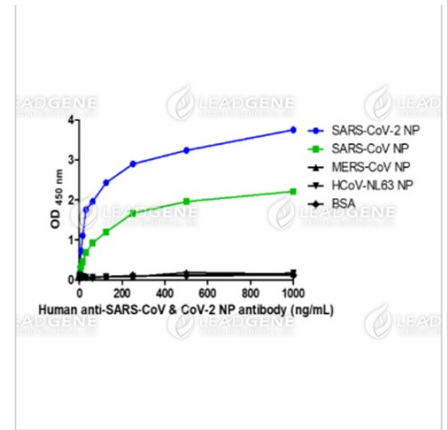
Suggestion: Divide antibody into several vials. Keep only vials for usage at 2-8°C.

Image


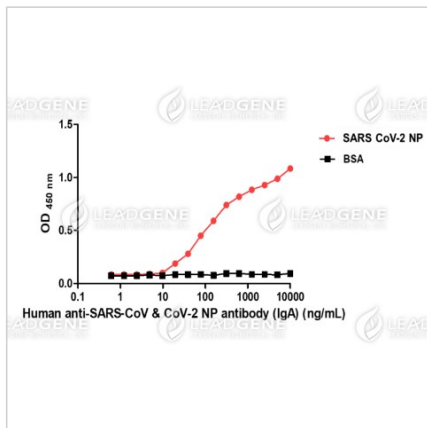
Immunofluorescence analysis of
 Human anti-SARS-CoV & CoV-2 NP
 Antibody (IgG) (1:500)



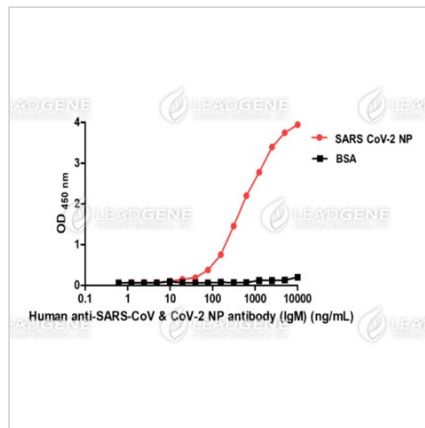
Multi-cycle kinetic analysis of Human anti-SARS CoV & CoV-2 NP Antibody (IgG) to Human SARS CoV-2 Nucleocapsid protein by using Biacore T200.



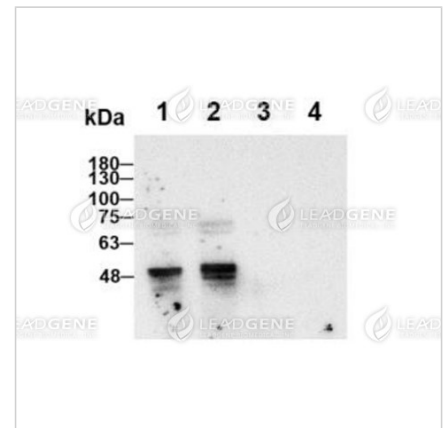
ELISA titration of Human anti-SARS-CoV & CoV-2 NP Antibody (IgG)



ELISA titration of Human anti-SARS-CoV & CoV-2 NP Antibody (IgA)

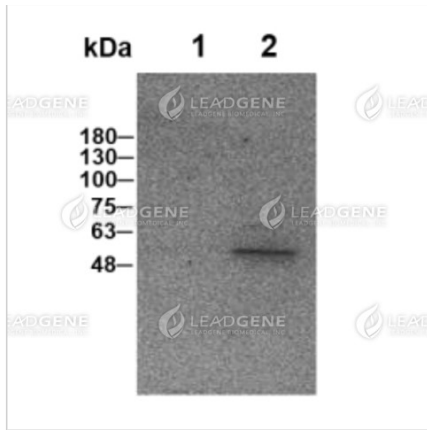


ELISA titration of Human anti-SARS-CoV & CoV-2 NP Antibody (IgM)



Western blotting analysis of Human anti-SARS-CoV & CoV-2 NP antibody (IgG) (1:1000)

Lane 1 : SARS CoV-2 NP
Lane 2 : SARS CoV NP
Lane 3 : MERS COV NP
Lane 4 : HCoV-NL63 NP



Western blotting analysis of Human
anti-SARS-CoV & CoV-2 NP antibody
(IgG) (1:1000)

Lane 1 : HEK293 lysate

Lane 2 : SARS CoV-2 VLP

Disclaimer : For Research Use or Further Manufacturing Only.