

## Anti-SARS-CoV & CoV-2 NP IgG Antibody

<b>Catalog Number</b>	LDG0076YA
<b>Package</b>	100 µg / 1 mg / Customized package

For full product information, images and publications, please visit [our website](#).



### Overview

#### Description

Human anti-SARS-CoV & CoV-2 NP antibody recognize human SARS Coronavirus Nucleocapsid protein (NP). Coronavirus NP localize to the cytoplasm and the nucleolus in both Virus-like particle (VLP) infected primary cells and in cells transfected with NP plasmid. NP has abundant expression in coronavirus and is a highly immunogenic phosphoprotein. NP is also conserved in sequence. Due to these characteristic above, the NP is an ideal marker for diagnosis.

#### Product Note

Recommended dilution factor:

ELISA: 1:5000-20000

WB: 1:1000-5000

IFA: 1:500-1000

FACS: Assay dependent

Note: Working dilution for specific application should be determined by the investigator to obtain the best conditions.

### Specifications

#### Clonality

Recombinant Human IgG

#### Isotype

IgG1

#### Reactivity

SARS-CoV & CoV-2

#### Application

ELISA, WB, IFA

#### Conjugation

Unconjugated

#### Concentration

1 mg/mL

#### Tainan Headquarters

+886-6-2536677

bd@leadgene.com.tw

#### Innovation & Research Center

+886-2-27065528

#### CLD Center

+886-6-2536677

### Storage Buffer

Phosphate Buffered Saline containing 0.03% ProClin 300, pH 7.4.

### Form

Liquid

### Specificity

Nucleocapsid protein

## Instruction

### Shipping

The product is shipped with polar packs. Upon receipt, store it immediately at -20°C or lower for long term storage.

### Stability & Storage

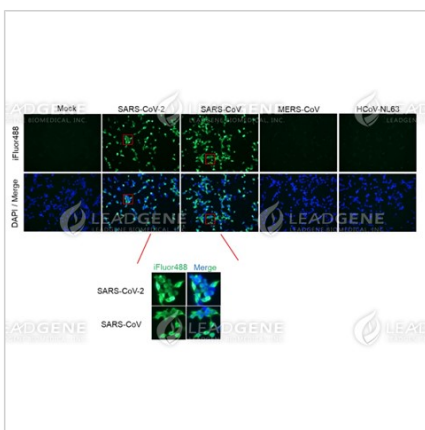
This product is stable after storage at:

- 2-8°C for 2 weeks under sterile conditions from date of receipt.
- -20°C or -80°C for 12 months under sterile conditions from date of receipt.

Avoid repeated freeze/thaw cycles.

Suggestion: Divide antibody into several vials. Keep only vials for usage at 2-8°C.

## Image



Immunofluorescence analysis of  
Human anti-SARS-CoV & CoV-2 NP  
Antibody (IgG) (1:500)

### Tainan Headquarters

+886-6-2536677

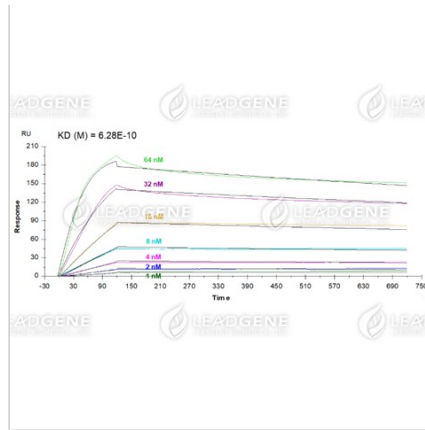
bd@leadgene.com.tw

### Innovation & Research Center

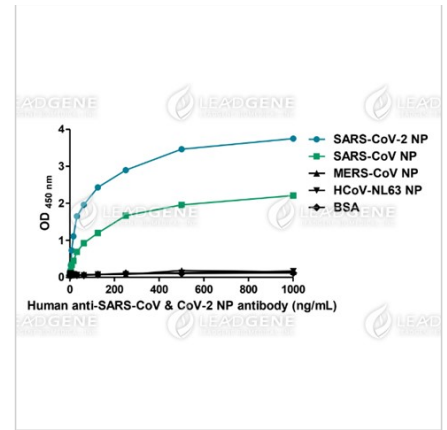
+886-2-27065528

### CLD Center

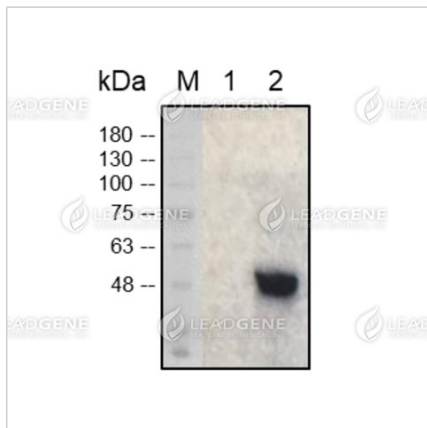
+886-6-2536677



Multi-cycle kinetic analysis of Human anti-SARS-CoV & CoV-2 NP Antibody (IgG) to Human SARS-CoV-2 Nucleocapsid protein by using Biacore T200.

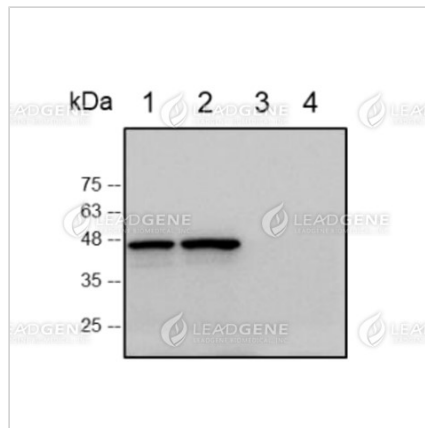


ELISA titration of Human anti-SARS-CoV & CoV-2 NP Antibody (IgG)



Western blotting analysis of Human anti-SARS-CoV & CoV-2 NP antibody (IgG) (1:1000)

Lane 1 : SARS-CoV-2 NP  
Lane 2 : SARS-CoV NP  
Lane 3 : MERS-CoV NP  
Lane 4 : HCoV-NL63 NP



Western blotting analysis of Human anti-SARS-CoV & CoV-2 NP antibody (IgG) (1:1000)

Lane 1 : 293T control lysate  
Lane 2 : SARS-CoV-2 VLP

**Disclaimer** : For Research Use or Further Manufacturing Only.