

## Anti-CD326 Antibody [Clone 1H7]

Catalog Number	LDG0070YA
Package	100 µg / Customized package

For full product information, images and publications, please visit [our website](#).



### Overview

#### Description

Mouse anti-human CD326 mAb recognizes CD326, also known as Epithelial Cell Adhesion Molecule (EpCAM). CD326 expression has been reported to be a possible marker of early malignancy, with expression being increased in tumor cells.

#### Product Note

Recommended dilution factor:

ELISA: 1:5000-20000

WB: 1:1000-5000

IFA: 1:500-1000

FACS: 1:500-1000

Note: Working dilution for specific application should be determined by the investigator to obtain the best conditions.

### Specifications

#### Host

Mouse

#### Clonality

Monoclonal

#### Isotype

IgG2a

#### Clone Name

clone 1H7

#### Immunogen

MDA-MB-231 adenocarcinoma cell line

#### Reactivity

Human

#### Application

ELISA, WB, IFA, FACS

#### Conjugation

Unconjugated

#### Tainan Headquarters

+886-6-2536677

bd@leadgene.com.tw

#### Innovation & Research Center

+886-2-27065528

#### CLD Center

+886-6-2536677

**Concentration**

1 mg/mL

**Specificity**

CD326

**Storage Buffer**

Phosphate Buffered Saline, pH 7.4.

**Form**

Liquid

**Instruction****Shipping**




The product is shipped with polar packs. Upon receipt, store it immediately at 2-8°C for long term storage.

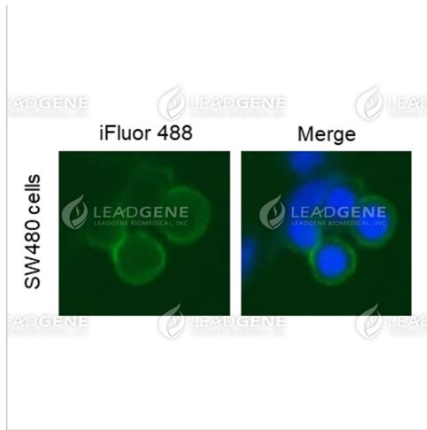
**Stability & Storage**

This product is stable after storage at:

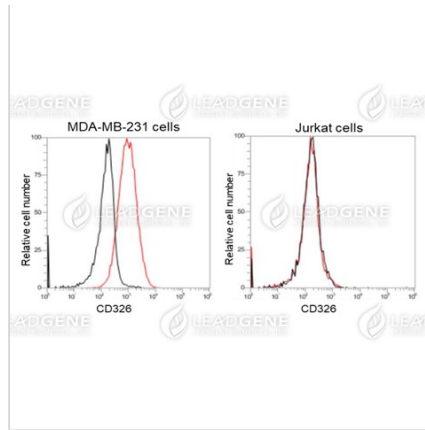
- 2-8°C for 6 months under sterile conditions from date of receipt.

Briefly centrifuge vials before opening.

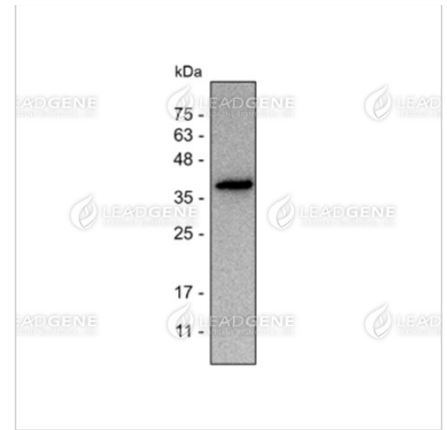
**Image****Tainan Headquarters** +886-6-2536677 [bd@leadgene.com.tw](mailto:bd@leadgene.com.tw)**Innovation & Research Center** +886-2-27065528**CLD Center** +886-6-2536677



Immunofluorescence analysis of anti-CD326 mAb  
 SW480 cells were fixed in 4% PFA.  
 Experimental cells were stained with mouse anti-human CD326 monoclonal antibody (1:500) followed by secondary antibodies (goat anti-Mouse IgG-iFluor 488, 1:400, green).  
 All cell nuclei were stained with Hoechst 33342 (blue).



Flow Cytometry analysis of anti-CD326 mAb  
 MDA-MB-231 and Jurkat cells were stained with mouse anti-human CD326 monoclonal antibody at 1 µg/ml (red) and without antibody control (black).



Western blotting analysis of anti-CD326 mAb (1:1000)  
 SW480 cell lysate (non-reduced) (30 µg)

**Disclaimer :** For Research Use or Further Manufacturing Only.