

Swine CCL2, His Tag, E. coli

Catalog Number	LDG006PSE
Package	5 µg / 20 µg / 100 µg / Customized package

For full product information, images and publications, please visit [our website](#).



Specifications

Species of Origin

Swine

Affinity Tag

His Tag (N-term)

Purity

>98% as determined by SDS-PAGE analysis.

Endotoxin Level

<0.1 EU per 1 µg of the protein by the LAL method.

Expression System

Escherichia coli

Storage Buffer

Lyophilized from a 0.2 µm filtered solution of PBS, pH 7.4.

Molecular weight

The protein has a calculated MW of 9.42 kDa.
The protein migrates as 11-17 kDa under reducing condition (SDS-PAGE analysis).

Form

Lyophilized

Background

Tainan Headquarters

+886-6-2536677

bd@leadgene.com.tw

Innovation & Research Center

+886-2-27065528

CLD Center

+886-6-2536677

Background

CCL2 (Chemokine ligand 2) is also named for the MCP1 (monocyte chemoattractant protein 1) which is a cytokine of CC chemokine family. CCL2 plays an important role in the recruitment of T cell and monocyte during inflammation, which is induced by the infection. CCL2 is secreted from the osteoblasts which is under the mediation of the NF- κ B pathway. In cancer therapy, CCL2 plays an important role in increasing the anti-tumor capability of monocytes and neutrophils.

Uniprot ID

#P42831

Synonyms

C-C motif chemokine 2, Monocyte chemoattractant protein 1, Monocyte chemotactic protein 1, MCP-1, Small-inducible cytokine A2

Sequence Note

Gln24-Pro99

Instruction

Reconstitution

It is recommended to reconstitute the lyophilized protein in sterile H₂O to a concentration not less than 200 μ g/mL and incubate the stock solution for at least 20 min to ensure sufficient re-dissolved.

Stability & Storage

This product is stable after storage at:

- -20°C for 12 months in lyophilized state from date of receipt.
- -20°C or -80°C for 1 month under sterile conditions after reconstitution.

Avoid repeated freeze/thaw cycles.

Shipping

The product is shipped with polar packs. Upon receipt, store it immediately at -20°C or lower for long term storage.

Image

Tainan Headquarters

+886-6-2536677

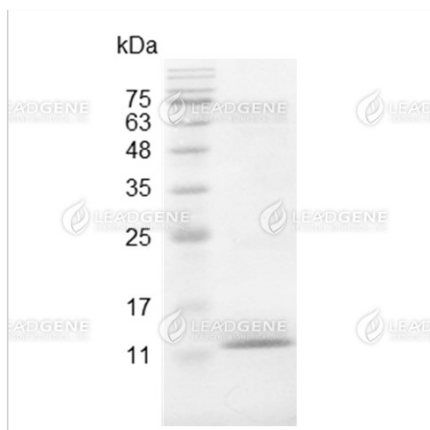
bd@leadgene.com.tw

Innovation & Research Center

+886-2-27065528

CLD Center

+886-6-2536677



SDS-PAGE analysis of recombinant
swine CCL2.

Disclaimer : For Research Use or Further Manufacturing Only.