

## Mouse CXCL2, His Tag, E. coli

<b>Catalog Number</b>	LDG006PME
<b>Package</b>	5 µg / 20 µg / 100 µg / Customized package

For full product information, images and publications, please visit [our website](#).



### Specifications

#### Species of Origin

Mouse

#### Affinity Tag

His Tag (N-term)

#### Purity

>98% as determined by SDS-PAGE analysis.

#### Activity

Measure by its ability to chemoattract human THP1 cells. Chemotactic activity was observed at a concentration of 100 ng/mL.

#### Form

Lyophilized

#### Expression System

Escherichia coli

#### Storage Buffer

Lyophilized from a 0.2 µm filtered solution of PBS, pH 7.4.

#### Molecular weight

The protein has a calculated MW of 8.66 kDa. The protein migrates below 11 kDa under reducing condition (SDS-PAGE analysis).

#### Endotoxin Level

<0.1 EU per 1 µg of the protein by the LAL method.

### Background

#### Tainan Headquarters

+886-6-2536677

bd@leadgene.com.tw

#### Innovation & Research Center

+886-2-27065528

#### CLD Center

+886-6-2536677

**Background**

C-X-C motif chemokine 2 (CXCL2) also named Growth-regulated oncogene beta (GRO $\beta$ ), which is a chemokine of the intercrine alpha family. CXCL2 is a 8.1 kDa protein containing 73 amino acid residues. CXCL2 is often expressed in immune cells such as macrophages and monocytes. CXCL2 plays an important role with immune responses and cancer progression. CXCL2 activates the cell signal transduction with casepas1 that affects the cell proliferation, differentiation and migration.

**Uniprot ID**

#P10889

**Synonyms**

C-X-C motif chemokine 2, Macrophage inflammatory protein 2, MIP2

**Sequence Note**

Ala28-Asn110

**Instruction****Reconstitution**

It is recommended to reconstitute the lyophilized protein in sterile H<sub>2</sub>O to a concentration of 200  $\mu$ g/mL and incubate the stock solution for at least 20 min to ensure sufficient re-dissolved.

**Stability & Storage**

This product is stable after storage at:

- -20°C for 12 months in lyophilized state from date of receipt.
- -20°C or -80°C for 1 month under sterile conditions after reconstitution.

Avoid repeated freeze/thaw cycles.

**Shipping**

The product is shipped with polar packs. Upon receipt, store it immediately at -20°C or lower for long term storage.

**Image****Tainan Headquarters**

+886-6-2536677

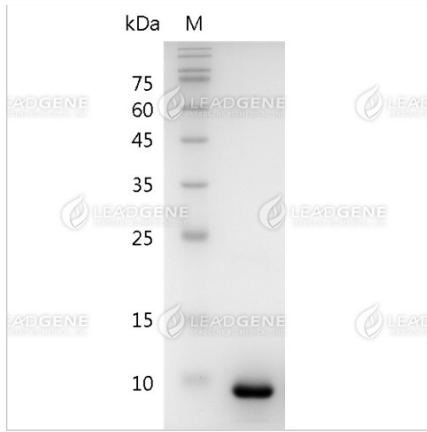
bd@leadgene.com.tw

**Innovation & Research Center**

+886-2-27065528

**CLD Center**

+886-6-2536677



SDS-PAGE analysis of recombinant mouse CXCL2.

**Disclaimer :** For Research Use or Further Manufacturing Only.