

Human IL-4, His Tag, E. coli

Catalog Number	LDG006PHE
Package	5 µg / 20 µg / 100 µg / Customized package

For full product information, images and publications, please visit [our website](#).



Specifications

Species of Origin

Human

Expression System

Escherichia coli

Affinity Tag

His Tag (C-term)

Storage Buffer

Lyophilized from a 0.2 µm filtered solution of PBS, pH 8.0.

Purity

>98% as determined by SDS-PAGE analysis.

Molecular weight

The protein has a calculated MW of 15.9 kDa. The protein migrates as 12 kDa under reducing condition (SDS-PAGE analysis).

Activity

Measure by its ability to induce TF-1 cells proliferation. The ED₅₀ for this effect is < 0.2 ng/mL. The specific activity of recombinant human IL-4 is approximately > 1 x 10⁷ IU/mg.

Endotoxin Level

<0.1 EU per 1 µg of the protein by the LAL method.

Form

Lyophilized

Background

Tainan Headquarters

+886-6-2536677

bd@leadgene.com.tw

Innovation & Research Center

+886-2-27065528

CLD Center

+886-6-2536677

Background

Interleukin-4 (IL-4) is a key cytokine produced by activated T cells, mast cells, basophils, neutrophils and eosinophils. IL-4 is critical for the development of Th2-mediated responses, which is related to allergy and asthma. It can also regulate B cell responses, including survival, cell proliferation and gene expression. IL-4 also plays fundamental role for B-cell stimulation, including induction of the IgE isotype switch.

Uniprot ID

#P05112

Synonyms

Interleukin-4, B-cell stimulatory factor 1, BSF-1, Binetrakin, Lymphocyte stimulatory factor 1, Pitrakinra

Sequence Note

His25-Ser153

Instruction

Reconstitution

It is recommended to reconstitute the lyophilized protein in sterile H₂O to a concentration of 200 µg/mL and incubate the stock solution for at least 20 min to ensure sufficient re-dissolved.

Stability & Storage

This product is stable after storage at:

- -20°C for 12 months in lyophilized state from date of receipt.
- -20°C or -80°C for 2 weeks under sterile conditions after reconstitution.

Avoid repeated freeze/thaw cycles.

Shipping

The product is shipped with polar packs. Upon receipt, store it immediately at -20°C or lower for long term storage.

Image

Tainan Headquarters

+886-6-2536677

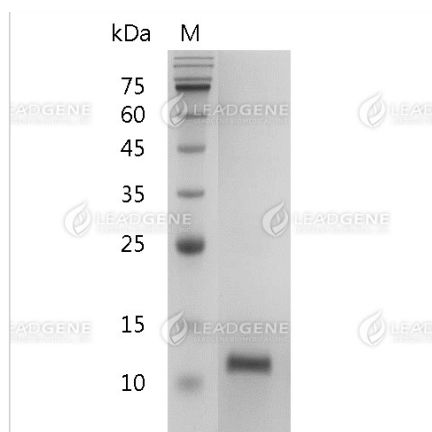
bd@leadgene.com.tw

Innovation & Research Center

+886-2-27065528

CLD Center

+886-6-2536677



SDS-PAGE analysis of recombinant human IL-4.

Disclaimer : For Research Use or Further Manufacturing Only.