

Mouse CXCL1, Tag Free, E. coli

Catalog Number	LDG005PME
Package	5 µg / 20 µg / 100 µg / Customized package

For full product information, images and publications, please visit [our website](#).



Specifications

Species of Origin

Mouse

Affinity Tag

Tag Free

Purity

>95% as determined by SDS-PAGE analysis.

Activity

Measure by its ability to chemoattract human THP1 cells. Chemotactic activity was observed at a concentration of 200 ng/mL.

Form

Lyophilized

Expression System

Escherichia coli

Storage Buffer

Lyophilized from a 0.2 µm filtered solution containing 50 mM Tris and 150 mM NaCl, pH 8.5.

Molecular weight

The protein has a calculated MW of 7.45 kDa. The protein migrates below 11 kDa under reducing condition (SDS-PAGE analysis).

Endotoxin Level

<0.1 EU per 1 µg of the protein by the LAL method.

Background

Tainan Headquarters

+886-6-2536677

bd@leadgene.com.tw

Innovation & Research Center

+886-2-27065528

CLD Center

+886-6-2536677

Background

C-X-C motif chemokine 1 (CXCL1) also named Growth-regulated oncogene alpha (GRO α), which is a chemokine of the intercrine alpha family. CXCL1 is a 7.5 kDa protein containing 68 amino acid residues. CXCL1 is often expressed in immune cells such as macrophage and neutrophils. CXCL1 plays an important role with immune responses and cancer progression. CXCL1 activates the cell signal transduction with casepas1 that affects the cell proliferation, differentiation and migration.

Uniprot ID

P12850

Synonyms

Growth-regulated alpha protein, C-X-C motif chemokine 1, Platelet-derived Growth Factors-inducible protein KC, Secretory protein N51

Sequence Note

Asn29-Lys96

Instruction

Reconstitution

It is recommended to reconstitute the lyophilized protein in sterile H₂O to a concentration of 110 μ g/mL and incubate the stock solution for at least 20 min to ensure sufficient re-dissolved.

Stability & Storage

This product is stable after storage at:

- -20°C for 12 months in lyophilized state from date of receipt.
- -20°C or -80°C for 1 month under sterile conditions after reconstitution.

Avoid repeated freeze/thaw cycles.

Shipping

The product is shipped with polar packs. Upon receipt, store it immediately at -20°C or lower for long term storage.

Image

Tainan Headquarters

+886-6-2536677

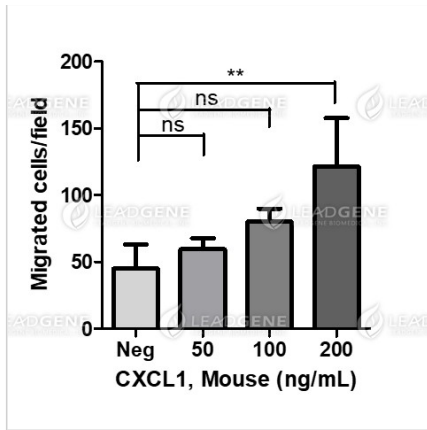
✉ bd@leadgene.com.tw

Innovation & Research Center

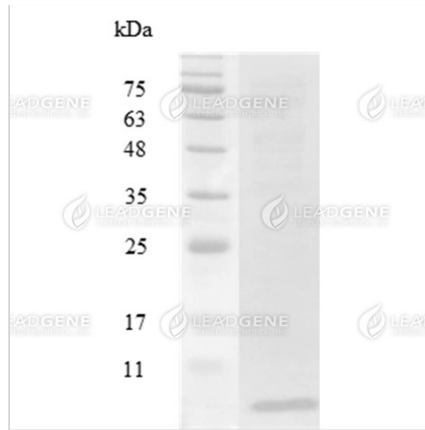
+886-2-27065528

CLD Center

+886-6-2536677



Activity analysis of recombinant Mouse CXCL1, His Tag, E. coli. Measure by its ability to chemoattract human THP1 cells. Chemotactic activity was observed at a concentration of 200 ng/mL.



SDS-PAGE analysis of recombinant mouse CXCL1.

Disclaimer : For Research Use or Further Manufacturing Only.