

Anti-HBsAg Antibody [Clone 2H11]

Catalog Number	LDG0052YA
Package	100 µg / Customized package

For full product information, images and publications, please visit [our website](#).



Overview

Description

Chronic infection by hepatitis B virus results in liver cirrhosis, cancer, and high mortality in infants and young adults. In chronic infection, patients carrying the virus may not show clinical symptoms. Hepatitis virus B surface antigen (HBsAg), also known as Australia antigen, is the envelop protein at the surface of hepatitis B virus. Positive test result for HBsAg indicates that the blood provider is a human hepatitis B virus carrier and the blood is infectious.

Anti-HBsAg is a mouse monoclonal antibody that can reacts with Virus. This antibody has been shown to work in applications such as: EIA, Immunoassay, and ELISA.

Product Note

Recommended dilution factor:

ELISA: 1:5000-20000

WB: 1:1000-5000

IFA: 1:500-1000

Note: Working dilution for specific application should be determined by the investigator to obtain the best conditions.

Specifications

Host	Clonality
Mouse	Monoclonal
Isotype	Clone Name
IgG2a	clone 2H11
Immunogen	Reactivity
Hepatitis B virus surface protein	Hepatitis B virus

Tainan Headquarters

+886-6-2536677

bd@leadgene.com.tw

Innovation & Research Center

+886-2-27065528

CLD Center

+886-6-2536677

Application

ELISA, WB, IFA

Concentration

1 mg/mL

Specificity

Surface protein

Conjugation

Unconjugated

Storage Buffer

Phosphate Buffered Saline containing 0.03% ProClin 300, pH 7.4.

Form

Liquid

Instruction**Shipping**

The product is shipped with polar packs. Upon receipt, store it immediately at -20°C or lower for long term storage.

Stability & Storage

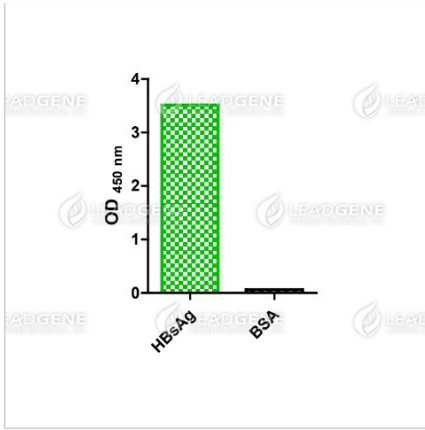
This product is stable after storage at:

- 2-8°C for 2 weeks under sterile conditions from date of receipt.
- -20°C or -80°C for 12 months under sterile conditions from date of receipt.

Avoid repeated freeze/thaw cycles.

Suggestion: Divide antibody into several vials. Keep only vials for usage at 2-8°C.

Image**Tainan Headquarters** +886-6-2536677 bd@leadgene.com.tw**Innovation & Research Center** +886-2-27065528**CLD Center** +886-6-2536677



Direct ELISA of HBsAg antibody,
clone 2H11

Disclaimer : For Research Use or Further Manufacturing Only.