

LeadGMP® PNGase F

Catalog Number	LDG004R-GMP
Package	15 KU / 75 KU / Customized package

For full product information, images and publications, please visit [our website](#).



Overview

Description

PNGase F is an enzyme used in biochemistry and molecular biology to remove N-linked glycans from glycoproteins. By using PNGase F, researchers can enzymatically cleave between these sugar chains and asparagine residues of glycoproteins, allowing for the study of protein structure and function, particularly in glycosylation research.

Components

Package	Items	Quantity
15 KU	LeadGMP® PNGase F	1 vial (400 U/μL)
	10X Glycoprotein Denaturing Buffer	1 vial (1 mL)
	10X Reaction buffer	1 vial (1 mL)
	10% NP-40	1 vial (1 mL)
75 KU	LeadGMP® PNGase F	1 vial (400 U/μL)
	10X Glycoprotein Denaturing Buffer	1 vial (1 mL)
	10X Reaction buffer	1 vial (1 mL)
	10% NP-40	1 vial (1 mL)

Specifications

Tainan Headquarters

+886-6-2536677

bd@leadgene.com.tw

Innovation & Research Center

+886-2-27065528

CLD Center

+886-6-2536677

Expression System

Escherichia coli

Storage Buffer

20mM Tris-HCl, 50mM NaCl, 5mM EDTA, pH 7.5

Unit Definition

One unit is defined as the amount of enzyme required to remove > 95% of the carbohydrate from 10 µg of denatured RNase B in 1 hour at 37°C in a total reaction volume of 20 µL.

Mycoplasma

Not detected

Concentration

400 U /µL

Purity

>95% as determined by SDS-PAGE analysis.

Endotoxin Level

<0.05 EU per 1 µg of the protein by the LAL method.

Form

Liquid

Instruction**Tainan Headquarters** +886-6-2536677 bd@leadgene.com.tw**Innovation & Research Center** +886-2-27065528**CLD Center** +886-6-2536677

Stability & Storage

This product is stable after storage at:

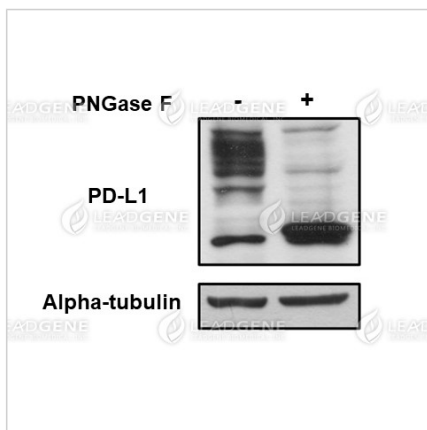
- -20°C for long-term storage under sterile conditions. Avoid repeated free-thaw cycles.

Manufacturing Specifications

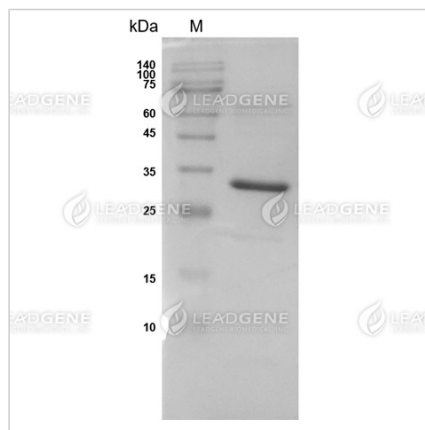
LeadGMP® recombinant proteins are manufactured in ISO 13485:2016 and GMP certified facility. The processes include:

- Animal-free reagent and laboratory
- Manufactured and tested under GMP guideline
- Testing and traceability of raw material
- Records of the maintenance and equipment calibration
- Personnel training records
- Batch-to-batch consistency
- Documentation of QA control and process changes
- Manufactured and tested under an ISO 13485:2016 certified quality management system
- Stability monitor of product shelf-life

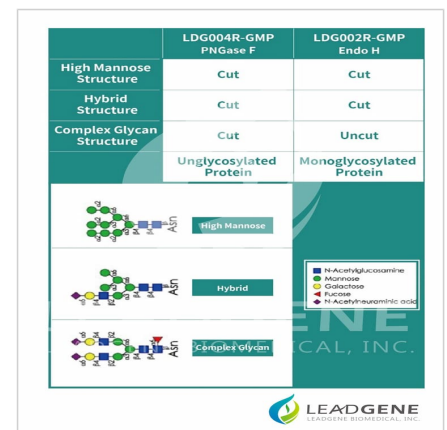
Image



The intracellular PD-L1 protein was digested with LeadGMP® PNGase F and analyzed by Western blotting. The assay was performed by incubating 400 U PNGase F and 20 µg of glycoprotein from whole cell lysate.





SDS-PAGE analysis of recombinant PNGase F



PNGase F cleaves high mannose, hybrid-type and complex structure glycans.

Disclaimer : For Research Use or Further Manufacturing Only.

Tainan Headquarters +886-6-2536677 bd@leadgene.com.tw**Innovation & Research Center** +886-2-27065528**CLD Center** +886-6-2536677