

Swine CXCL11, His Tag, E. coli

Catalog Number	LDG004PSE
Package	5 µg / 20 µg / 100 µg / Customized package

For full product information, images and publications, please visit [our website](#).



Specifications

Species of Origin

Swine

Affinity Tag

His Tag (N-term)

Purity

>98% as determined by SDS-PAGE analysis.

Endotoxin Level

<0.1 EU per 1 µg of the protein by the LAL method.

Expression System

Escherichia coli

Storage Buffer

Lyophilized from a 0.2 µm filtered solution of PBS, pH 7.4.

Molecular weight

The protein has a calculated MW of 9.72 kDa.
The protein migrates about 11 kDa under reducing condition (SDS-PAGE analysis).

Form

Lyophilized

Background

Tainan Headquarters

+886-6-2536677

bd@leadgene.com.tw

Innovation & Research Center

+886-2-27065528

CLD Center

+886-6-2536677

Background

C-X-C motif chemokine 11 (CXCL11) also named Interferon-gamma-inducible protein 9 (IP-9), which is a chemokine of the intercrine alpha family. CXCL11 is a 8.8kDa protein containing 79 amino acid residues. To CXCR3, CXCL11 has higher affinity than CXCL10 and CXCL9 which plays a role in immune activation. CXCL11 induces the activation of T cells which is also a chemotaxis for T cells. CXCL11 is produced in response for IFN Family.

Sequence Note

Phe22-Val100

Uniprot ID

NP_001121963 1

Instruction

Reconstitution

It is recommended to reconstitute the lyophilized protein in sterile H₂O to a concentration not less than 200 µg/mL and incubate the stock solution for at least 20 min to ensure sufficient re-dissolved.

Stability & Storage

This product is stable after storage at:

- -20°C for 12 months in lyophilized state from date of receipt.
- -20°C or -80°C for 1 month under sterile conditions after reconstitution.

Avoid repeated freeze/thaw cycles.

Shipping

The product is shipped with polar packs. Upon receipt, store it immediately at -20°C or lower for long term storage.

Image

Tainan Headquarters

+886-6-2536677

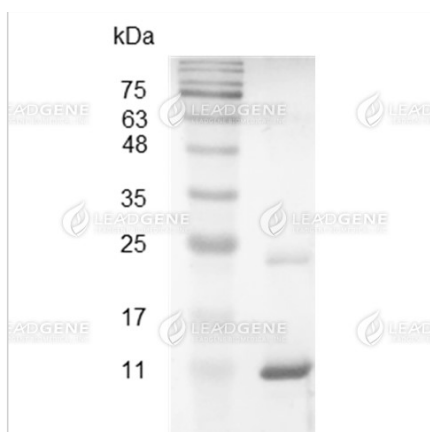
bd@leadgene.com.tw

Innovation & Research Center

+886-2-27065528

CLD Center

+886-6-2536677



SDS-PAGE analysis of recombinant swine CXCL11.

Disclaimer : For Research Use or Further Manufacturing Only.