

Mouse G-CSF, His Tag, E. coli

Catalog Number	LDG004PME
Package	5 µg / 20 µg / 100 µg / Customized package

For full product information, images and publications, please visit [our website](#).



Specifications

Species of Origin

Mouse

Affinity Tag

His Tag (N-term)

Purity

>98% as determined by SDS-PAGE analysis.

Activity

Measure by its ability to induce proliferation in NFS-60 cells. The ED₅₀ for this effect is <1 ng/mL.

Form

Lyophilized

Expression System

Escherichia coli

Storage Buffer

Lyophilized from a 0.2 µm filtered solution of PBS, pH 7.4.

Molecular weight

The protein has a calculated MW of 19.76 kDa. The protein migrates as 17-25 kDa under reducing condition (SDS-PAGE analysis).

Endotoxin Level

<0.1 EU per 1 µg of the protein by the LAL method.

Background

Tainan Headquarters

+886-6-2536677

bd@leadgene.com.tw

Innovation & Research Center

+886-2-27065528

CLD Center

+886-6-2536677

Background

Granulocyte Colony-Stimulating Factor (G-CSF) is a 18.67 kDa protein containing 207 amino acid which secreted by monocytes, macrophages, fibroblasts, and endothelial cells, regulates cell growth, maturation, and development of myeloid cells. G-CSF is a member of the CSF family of glycoproteins, and makes the bone marrow produce more white blood cells so it can reduce the risk of infection after some types of cancer treatment. G-CSF is also an established useful clinical agent for increasing neutrophilic granulocytes levels. Mouse G-CSF shares 73% sequence homology with human G-CSF.

Uniprot ID

#P09920

Synonyms

Granulocyte colony-stimulating factor, G-CSF

Sequence Note

Glu55-Ala208

Instruction

Reconstitution

It is recommended to reconstitute the lyophilized protein in sterile H₂O to a concentration of 200 µg/mL and incubate the stock solution for at least 20 min to ensure sufficient re-dissolved.

Stability & Storage

This product is stable after storage at:

- -20°C for 12 months in lyophilized state from date of receipt.
- -20°C or -80°C for 1 month under sterile conditions after reconstitution.

Avoid repeated freeze/thaw cycles.

Shipping

The product is shipped with polar packs. Upon receipt, store it immediately at -20°C or lower for long term storage.

Image

Tainan Headquarters

+886-6-2536677

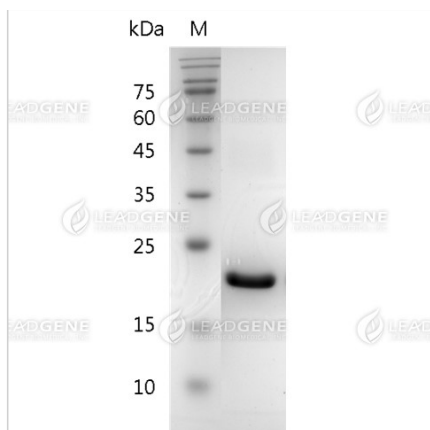
bd@leadgene.com.tw

Innovation & Research Center

+886-2-27065528

CLD Center

+886-6-2536677



SDS-PAGE analysis of recombinant mouse G-CSF.

Disclaimer : For Research Use or Further Manufacturing Only.