

Anti-TGF Beta 1 Antibody [Clone 51-3]

Catalog Number	LDG0047YA
Package	100 µg / Customized package

For full product information, images and publications, please visit [our website](#).



Overview

Description

Transforming growth factor beta (TGF-β), a polypeptide member of the transforming growth factor beta superfamily of cytokines that includes three isoforms, is involved in various biological processes. TGF-β1, the most abundant TGF-β isoform, is a secreted protein that plays important role in cell proliferation, differentiation and apoptosis and is involved in wound healing, inflammatory processes and prevention of tumor growth.

Product Note

Recommended dilution factor:

ELISA: 1:5000-20000

WB: 1:1000-10000

IFA: 1:400-1000

FACS: Assay dependent

Note: Working dilution for specific application should be determined by the investigator to obtain the best conditions.

Specifications

Host

Mouse

Clonality

Monoclonal

Isotype

IgG1

Clone Name

clone 51-3

Immunogen

TGF Beta 1

Reactivity

Human

Tainan Headquarters

+886-6-2536677

bd@leadgene.com.tw

Innovation & Research Center

+886-2-27065528

CLD Center

+886-6-2536677

Application

ELISA, WB, IFA, FACS

Conjugation

Unconjugated

Concentration

1 mg/mL

Storage Buffer

Phosphate Buffered Saline containing 0.03% ProClin 300, pH 7.4.

Specificity

TGF Beta 1

Form

Liquid

Instruction**Shipping**

The product is shipped with polar packs. Upon receipt, store it immediately at -20°C or lower for long term storage.

Stability & Storage

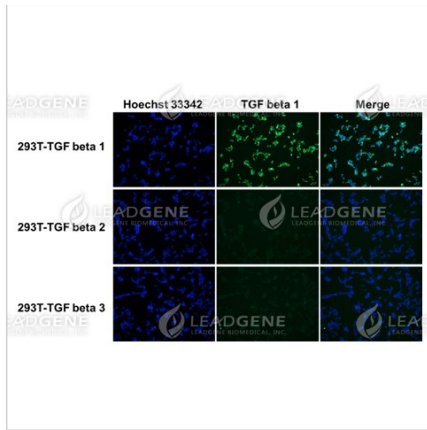
This product is stable after storage at:

- 2-8°C for 2 weeks under sterile conditions from date of receipt.
- -20°C or -80°C for 12 months under sterile conditions from date of receipt.

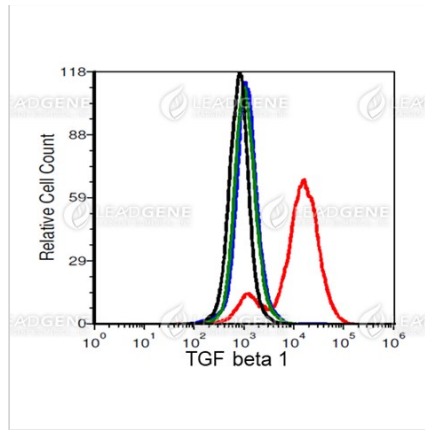
Avoid repeated freeze/thaw cycles.

Suggestion: Divide antibody into several vials. Keep only vials for usage at 2-8°C.

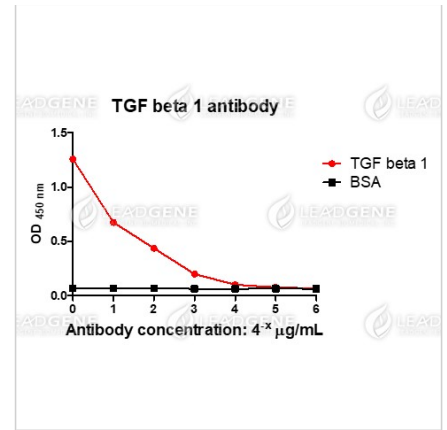
Image**Tainan Headquarters** +886-6-2536677 bd@leadgene.com.tw**Innovation & Research Center** +886-2-27065528**CLD Center** +886-6-2536677



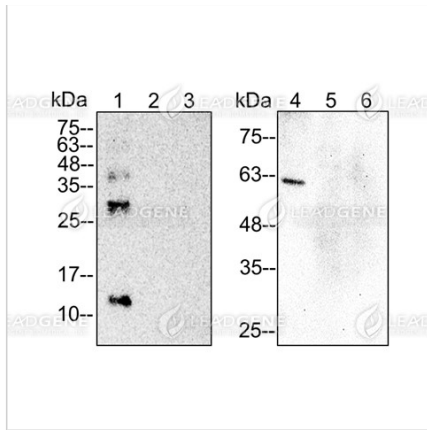
Immunofluorescence analysis of Anti-TGF Beta 1 Antibody [Clone 51-3]
 293T cells were respectively transfected with TGF beta 1, beta 2 and beta 3 plasmid and fixed in 4% PFA, permeabilized with PBS containing 0.1% Triton X-100. Cells were stained with mouse anti-TGF beta 1 monoclonal antibody (1:400) followed by secondary antibodies (goat anti-Mouse IgG-iFluor 488, 1:400, green) and cell nuclei were stained with Hoechst 33342 (Blue).



FACS analysis of Anti-TGF Beta 1 Antibody [Clone 51-3]
 293T cells (black) were respectively transfected with TGF beta 1 (red), beta 2 (blue) and beta 3 (green) plasmid and stained with mouse anti-TGF beta 1 monoclonal antibody at 1 µg/ml.



ELISA titration of Anti-TGF Beta 1 Antibody [Clone 51-3]
 Titration curve of anti-TGF beta 1 antibody in ELISA. Red: TGF beta 1; Black: BSA (negative control).



Western blotting analysis of Anti-TGF Beta 1 Antibody [Clone 51-3]
 Recombinant proteins and TGF beta 1, 2 or 3 transfected 293T cell lysates were stained with mouse anti-TGF beta 1 monoclonal antibody at 1:2000 dilution. Lane 1: recombinant TGF beta 1 protein (25 ng). Lane 2: recombinant TGF beta 2 protein (25 ng). Lane 3: recombinant TGF beta 3 protein (25 ng). Lane 4: TGF beta 1 transfected 293T cell lysates (30 µg). Lane 5: TGF beta 2 transfected 293T cell lysates (30 µg). Lane 6: TGF beta 3 transfected 293T cell lysates (30 µg).

Disclaimer : For Research Use or Further Manufacturing Only.