

Anti-ST2L Antibody [Clone 9G15]

Catalog Number	LDG0046YA
Package	100 µg / Customized package

For full product information, images and publications, please visit [our website](#).



Overview

Description

The growth stimulation expressed gene 2 (ST2 ; also known as Interleukin 1 receptor-like 1, IL1RL1), a member of the IL-1 receptor family, has at least three isoforms. ST2L, a main isoform of ST2 proteins, is a transmembrane receptor that is expressed on various inflammatory cells, including T helper 2 (Th2) cells, mast cells, basophils and eosinophils. ST2L is a receptor of Interleukin-33 (IL-33), this ligand-receptor pair plays important role in the regulation of Th2 cell responses and is involved in various inflammatory pathologies.

Product Note

Recommended dilution factor:

ELISA: 1:5000-20000

WB: 1:1000-10000

IFA: 1:400-1000

FACS: Assay dependent

Note: Working dilution for specific application should be determined by the investigator to obtain the best conditions.

Specifications

Host	Clonality
Mouse	Monoclonal
Isotype	Clone Name
IgG1	clone 9G15
Immunogen	Reactivity
ST2L	Human

Tainan Headquarters

+886-6-2536677

bd@leadgene.com.tw

Innovation & Research Center

+886-2-27065528

CLD Center

+886-6-2536677

Application

ELISA, WB, IFA, FACS

Concentration

1 mg/mL

Specificity

ST2L

Conjugation

Unconjugated

Storage Buffer

Phosphate Buffered Saline containing 0.03% ProClin 300, pH 7.4.

Form

Liquid

Instruction**Shipping**

The product is shipped with polar packs. Upon receipt, store it immediately at -20°C or lower for long term storage.



Stability & Storage

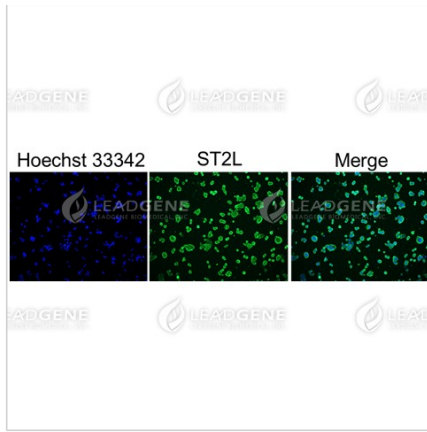
This product is stable after storage at:

- 2-8°C for 2 weeks under sterile conditions from date of receipt.
- -20°C or -80°C for 12 months under sterile conditions from date of receipt.

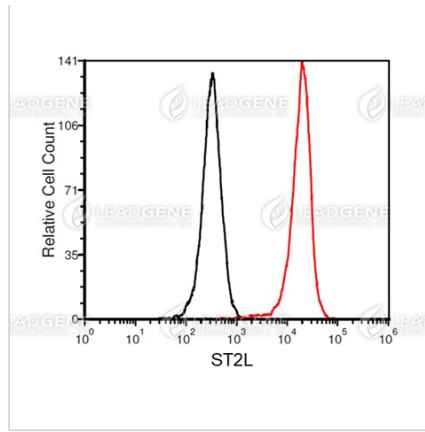
Avoid repeated freeze/thaw cycles.

Suggestion: Divide antibody into several vials. Keep only vials for usage at 2-8°C.

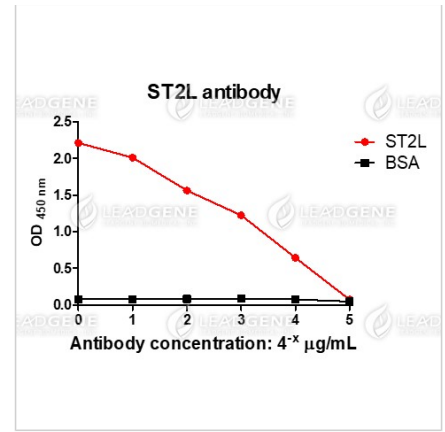
Image**Tainan Headquarters** +886-6-2536677 bd@leadgene.com.tw**Innovation & Research Center** +886-2-27065528**CLD Center** +886-6-2536677



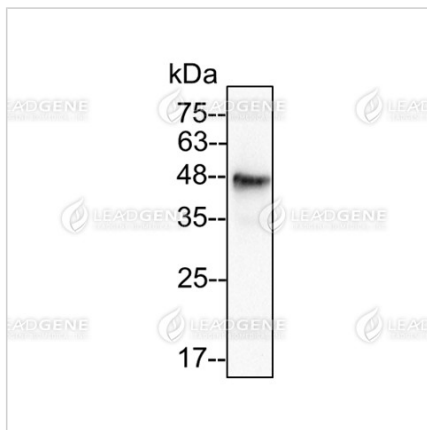
Immunofluorescence analysis of Anti-ST2L Antibody [Clone 9G15]
 HT29 cells were fixed in 4% PFA, permeabilized with PBS containing 0.1% Triton X-100. Cells were stained with mouse anti-ST2L monoclonal antibody (1:400) followed by secondary antibodies (goat anti-Mouse IgG-iFluor 488, 1:400, green) and cell nuclei were stained with Hoechst 33342 (Blue).



FACS analysis of Anti-ST2L Antibody [Clone 9G15]
 HT29 cells were stained with mouse anti-ST2L monoclonal antibody at 1 µg/ml (red) and without antibody control (black).



ELISA titration of Anti-ST2L Antibody [Clone 9G15]
 Titration curve of anti-ST2L antibody in ELISA. Red: ST2L; Black: BSA (negative control).



Western blotting analysis of Anti-ST2L Antibody [Clone 9G15]
 HT29 lysate (50 µg) was stained with mouse anti-IL-ST2L monoclonal antibody at 1:2000 dilution.

Disclaimer : For Research Use or Further Manufacturing Only.

Tainan Headquarters

+886-6-2536677

bd@leadgene.com.tw

Innovation & Research Center

+886-2-27065528

CLD Center

+886-6-2536677