

## Anti-CXCL12 Antibody [Clone 69-2]

|                       |                             |
|-----------------------|-----------------------------|
| <b>Catalog Number</b> | LDG0041YA                   |
| <b>Package</b>        | 100 µg / Customized package |

For full product information, images and publications, please visit [our website](#).



### Overview

#### Description

The CXC chemokine is a group of secreted proteins, attracts neutrophils and lymphocytes. CXC chemokine ligand 12 (CXCL12 or Stromal cell-derived factor 1, SDF-1), a member of the CXC chemokines, exists in three alternative splicing variants ( $\alpha$ ,  $\beta$  and  $\gamma$ ). This chemokine plays a crucial role in embryogenesis, hematopoiesis, angiogenesis and inflammation. CXCL12 is the only chemokine ligand for CXCR4, this ligand-receptor pair is essential during embryogenesis, hematopoiesis, and immune system organization.

#### Product Note

Recommended dilution factor:

ELISA: 1:5000-20000

WB: 1:1000-10000

IFA: 1:200-1000

FACS: Assay dependent

Note: Working dilution for specific application should be determined by the investigator to obtain the best conditions.

### Specifications

|                  |                   |
|------------------|-------------------|
| <b>Host</b>      | <b>Clonality</b>  |
| Mouse            | Monoclonal        |
| <b>Isotype</b>   | <b>Clone Name</b> |
| IgG2a            | clone 69-2        |
| <b>Immunogen</b> | <b>Reactivity</b> |
| CXCL12           | Human             |

#### Tainan Headquarters

+886-6-2536677

bd@leadgene.com.tw

#### Innovation & Research Center

+886-2-27065528

#### CLD Center

+886-6-2536677

**Application**

ELISA, WB, IFA, FACS

**Concentration**

1 mg/mL

**Specificity**

CXCL12

**Conjugation**

Unconjugated

**Storage Buffer**

Phosphate Buffered Saline containing 0.03% ProClin 300, pH 7.4.

**Form**

Liquid

**Instruction****Shipping**

The product is shipped with polar packs. Upon receipt, store it immediately at -20°C or lower for long term storage.




**Stability & Storage**

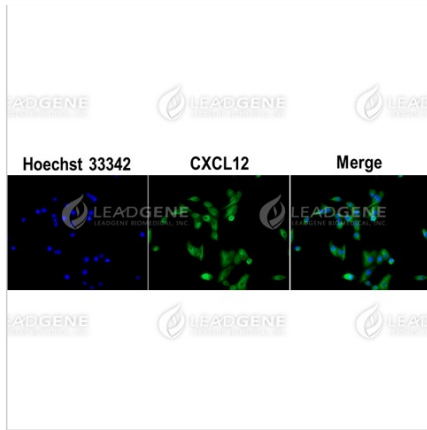
This product is stable after storage at:

- 2-8°C for 2 weeks under sterile conditions from date of receipt.
- -20°C or -80°C for 12 months under sterile conditions from date of receipt.

Avoid repeated freeze/thaw cycles.

Suggestion: Divide antibody into several vials. Keep only vials for usage at 2-8°C.

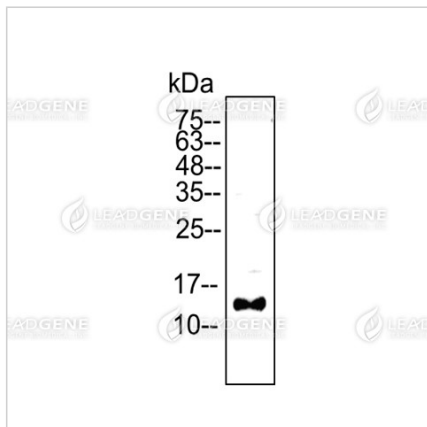
**Image****Tainan Headquarters** +886-6-2536677 [bd@leadgene.com.tw](mailto:bd@leadgene.com.tw)**Innovation & Research Center** +886-2-27065528**CLD Center** +886-6-2536677



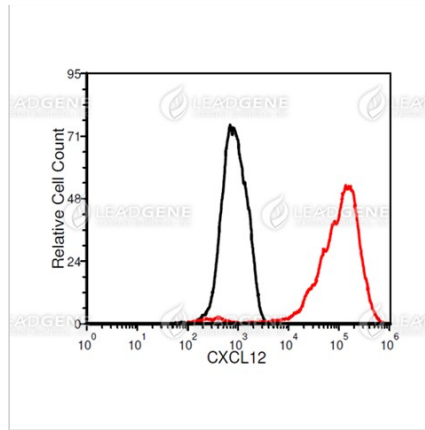
Immunofluorescence analysis of Anti-CXCL12 Antibody [Clone 69-2]  
 A549 cells were fixed in 4% PFA, permeabilized with PBS containing 0.1% Triton X-100. Cells were stained with mouse anti-CXCL12 monoclonal

antibody (1:200) followed by secondary antibodies (goat anti-Mouse IgG-iFluor 488, 1:400, green) and cell nuclei were stained with Hoechst 33342

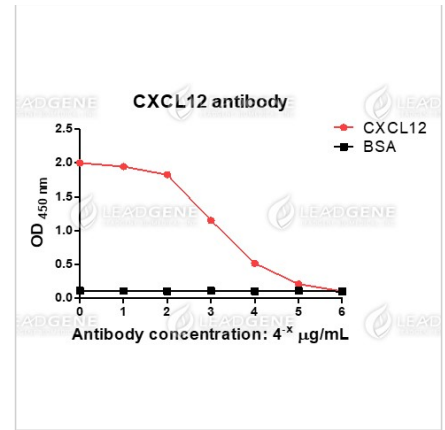
(Blue).



Western blotting analysis of Anti-CXCL12 Antibody [Clone 69-2]  
 HeLa cell lysates (30 µg) were stained with mouse anti-CXCL12 monoclonal antibody at 1:5000 dilution.



FACS analysis of Anti-CXCL12 Antibody [Clone 69-2]  
 A549 cells were stained with mouse anti-CXCL12 monoclonal antibody at 2 µg/ml (red) and without antibody control (black).



ELISA titration of Anti-CXCL12 Antibody [Clone 69-2]  
 Titration curve of anti-CXCL12 antibody in ELISA. Red: CXCL12; Black: BSA (negative control).

**Disclaimer :** For Research Use or Further Manufacturing Only.

---

**Tainan Headquarters**

☎ +886-6-2536677

✉ [bd@leadgene.com.tw](mailto:bd@leadgene.com.tw)

---

**Innovation & Research Center**

☎ +886-2-27065528

---

**CLD Center**

☎ +886-6-2536677