

## Anti-HDGF Antibody [Clone 83-5]

Catalog Number	LDG0040YA
Package	100 µg / 200 µg / Customized package

For full product information, images and publications, please visit [our website](#).



### Overview

#### Description

Hepatoma-derived growth factor (HDGF ; also known as high mobility group protein 1-like 2, HMG-1L2) is a heparin-binding protein that is ubiquitously expressed in normal tissues and abnormally expressed in various malignancies. HDGF has various intracellular functions and localizes to the nucleus, and thus it is characterized as a mitogen for many cell types. As its promoting growth, suppressing differentiation and exhibiting angiogenic properties, HDGF plays a critical role in tumor progression.

#### Product Note

Recommended dilution factor:

ELISA: 1:5000-20000

WB: 1:1000-10000

IFA: 1:200-1000

FACS: Assay dependent

Note: Working dilution for specific application should be determined by the investigator to obtain the best conditions.

### Specifications

<b>Host</b>	<b>Clonality</b>
Mouse	Monoclonal
<b>Isotype</b>	<b>Clone Name</b>
IgG1	clone 83-5
<b>Immunogen</b>	<b>Reactivity</b>
HDGF	Human

#### Tainan Headquarters

+886-6-2536677

bd@leadgene.com.tw

#### Innovation & Research Center

+886-2-27065528

#### CLD Center

+886-6-2536677

**Application**

ELISA, WB, IFA, FACS

**Conjugation**

Unconjugated

**Concentration**

1 mg/mL

**Storage Buffer**

Phosphate Buffered Saline containing 0.03% ProClin 300, pH 7.4.

**Specificity**

HDGF

**Form**

Liquid

**Instruction****Shipping**

The product is shipped with polar packs. Upon receipt, store it immediately at -20°C or lower for long term storage.

**Stability & Storage**

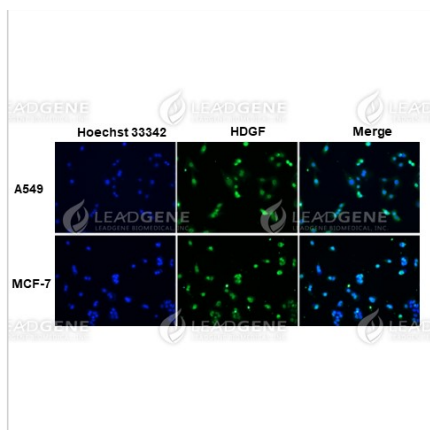
This product is stable after storage at:

- 2-8°C for 2 weeks under sterile conditions from date of receipt.
- -20°C or -80°C for 12 months under sterile conditions from date of receipt.

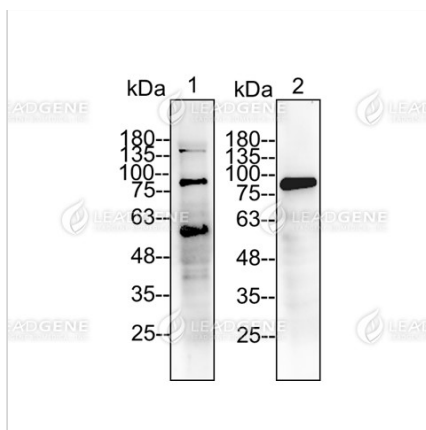
Avoid repeated freeze/thaw cycles.

Suggestion: Divide antibody into several vials. Keep only vials for usage at 2-8°C.

**Image****Tainan Headquarters** +886-6-2536677 [bd@leadgene.com.tw](mailto:bd@leadgene.com.tw)**Innovation & Research Center** +886-2-27065528**CLD Center** +886-6-2536677



Immunofluorescence analysis of Anti-HDGF Antibody [Clone 83-5]  
 Cells were fixed in 4% PFA, permeabilized with PBS containing 0.1% Triton X-100. Cells were stained with anti-HDGF monoclonal antibody (1:200) followed by secondary antibodies (goat anti-Mouse IgG-iFluor 488, 1:200, green) and cell nuclei were stained with Hoechst 33342 (Blue).



Western blotting analysis of Anti-HDGF Antibody [Clone 83-5]  
 Tissue lysate was stained with anti-HDGF monoclonal antibody at 1:5000 dilution. Lane 1: Mouse liver lysate (50 µg). Lane 2: Rat liver lysate (50 µg).

**Disclaimer :** For Research Use or Further Manufacturing Only.