

Anti-RAGE Antibody [Clone 16-1]

Catalog Number LDG0039YA

Package 100 µg / 200 µg / Customized package

For full product information, images and publications, please visit [our website](#).



Overview

Description

The immunoglobulin superfamily is a group of transmembrane proteins, contains a variable number of disulfide-stabilized motifs similar to immunoglobulins, associated with the adhesion, binding and recognition processes of cells. Receptor for advanced glycation endproducts (RAGE), a member of the immunoglobulin superfamily, not only binds to advanced glycation endproducts but also interacts with multiple ligands having common motifs. These interactions play important roles in various cellular processes, and associated with many human diseases.

Product Note

Recommended dilution factor:

ELISA: 1:5000-20000

WB: 1:1000-10000

IFA: 1:200-1000

FACS: Assay dependent

Note: Working dilution for specific application should be determined by the investigator to obtain the best conditions.

Specifications

Host

Mouse

Clonality

Monoclonal

Isotype

IgG1

Clone Name

clone 16-1

Immunogen

RAGE

Reactivity

Human

Tainan Headquarters

+886-6-2536677

bd@leadgene.com.tw

Innovation & Research Center

+886-2-27065528

CLD Center

+886-6-2536677

Application

ELISA, WB, IFA, FACS

Concentration

1 mg/mL

Specificity

RAGE

Conjugation

Unconjugated

Storage Buffer

Phosphate Buffered Saline containing 0.03% ProClin 300, pH 7.4.

Form

Liquid

Instruction**Shipping**

The product is shipped with polar packs. Upon receipt, store it immediately at -20°C or lower for long term storage.



Stability & Storage

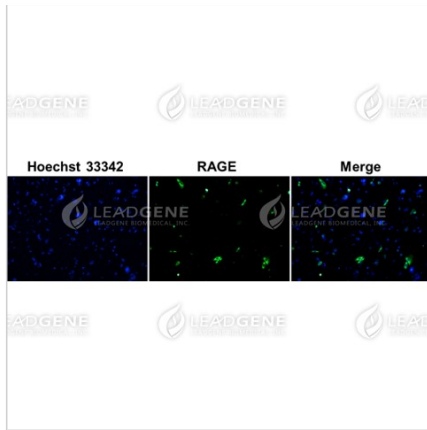
This product is stable after storage at:

- 2-8°C for 2 weeks under sterile conditions from date of receipt.
- -20°C or -80°C for 12 months under sterile conditions from date of receipt.

Avoid repeated freeze/thaw cycles.

Suggestion: Divide antibody into several vials. Keep only vials for usage at 2-8°C.

Image**Tainan Headquarters** +886-6-2536677 bd@leadgene.com.tw**Innovation & Research Center** +886-2-27065528**CLD Center** +886-6-2536677



Immunofluorescence analysis of Anti-RAGE Antibody [Clone 16-1]
 HEK293T cells were transfected with RAGE plasmid and fixed in 4% PFA, permeabilized with PBS containing 0.1% Triton X-100. Cells were stained with mouse anti-RAGE monoclonal antibody (1:200) followed by secondary antibodies (goat anti-Mouse IgG-iFluor 488, 1:200, green) and cell nuclei were stained with Hoechst 33342 (Blue).

Disclaimer : For Research Use or Further Manufacturing Only.