

Anti-IL-38 Antibody [Clone 56-1]

Catalog Number	LDG0034YA
Package	100 µg / Customized package

For full product information, images and publications, please visit [our website](#).



Overview

Description

Interleukin-38 (IL-38, or IL-1F10), a member of the IL-1 family, is a cytokine with anti-inflammatory properties, widely expressed in the placenta, tonsil B lymphocytes, spleen, skin and thymus. IL-38 has homology to IL-1 receptor antagonist (IL-1Ra) and IL-36 receptor antagonist (IL-36Ra), thus it can bind to several receptors to inhibit production of inflammatory cytokines, plays an important role in the regulation of inflammation and immune responses.

Product Note

Recommended dilution factor:

ELISA: 1:5000-20000

WB: 1:1000-5000

IFA: 1:200-1000

FACS: Assay dependent

Note: Working dilution for specific application should be determined by the investigator to obtain the best conditions.

Specifications

Host

Mouse

Isotype

IgG2b

Immunogen

Interleukin 38

Clonality

Monoclonal

Clone Name

clone 56-1

Reactivity

Human

Tainan Headquarters

+886-6-2536677

bd@leadgene.com.tw

Innovation & Research Center

+886-2-27065528

CLD Center

+886-6-2536677

Application

ELISA, WB, IFA, FACS

Conjugation

Unconjugated

Concentration

1 mg/mL

Storage Buffer

Phosphate Buffered Saline containing 0.03% ProClin 300, pH 7.4.

Specificity

Interleukin 38

Form

Liquid

Instruction**Shipping**

The product is shipped with polar packs. Upon receipt, store it immediately at -20°C or lower for long term storage.




Stability & Storage

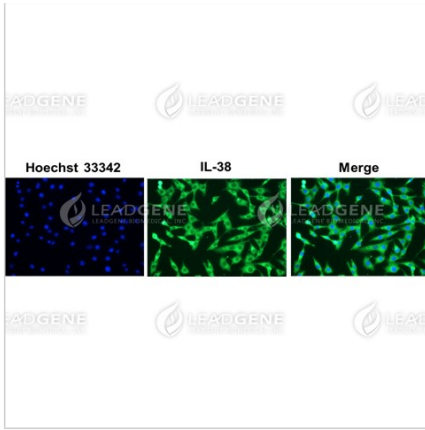
This product is stable after storage at:

- 2-8°C for 2 weeks under sterile conditions from date of receipt.
- -20°C or -80°C for 12 months under sterile conditions from date of receipt.

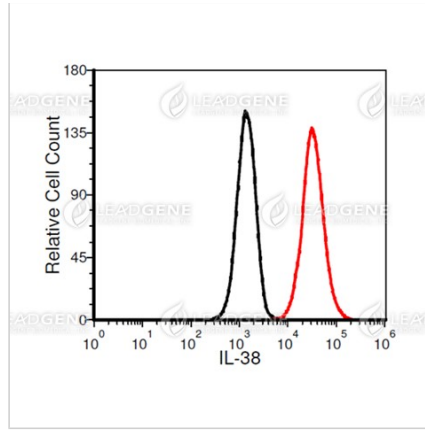
Avoid repeated freeze/thaw cycles.

Suggestion: Divide antibody into several vials. Keep only vials for usage at 2-8°C.

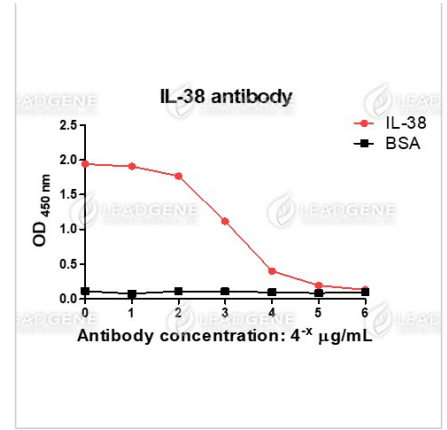
Image**Tainan Headquarters** +886-6-2536677 bd@leadgene.com.tw**Innovation & Research Center** +886-2-27065528**CLD Center** +886-6-2536677



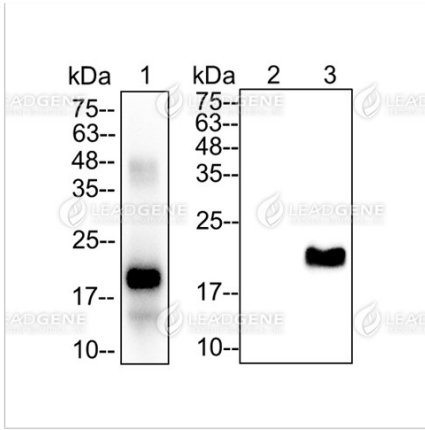
Immunofluorescence analysis of Anti-IL-38 Antibody [Clone 56-1]
 A549 cells were fixed in 4% PFA, permeabilized with PBS containing 0.1% Triton X-100. Cells were stained with mouse anti-IL-38 monoclonal antibody (1:200) followed by secondary antibodies (goat anti-Mouse IgG-iFluor 488, 1:400, green) and cell nuclei were stained with Hoechst 33342 (Blue).



FACS analysis of Anti-IL-38 Antibody [Clone 56-1]
 A549 cells were stained with mouse anti-IL-38 monoclonal antibody at 2 µg/ml (red) and without antibody control (black).



ELISA titration of Anti-IL-38 Antibody [Clone 56-1]
 Titration curve of anti-IL-38 antibody in ELISA. Red: IL-38; Black: BSA (negative control).



Western blotting analysis of Anti-IL-38
 Antibody [Clone 56-1]
 Recombinant IL-38 protein and IL-38
 transfected 293T cell lysates were
 stained with mouse anti-IL-38
 monoclonal antibody at 1:5000
 dilution. Lane
 1: Recombinant IL-38 protein (50 ng).
 Lane 2: 293T cell lysates (30 µg).
 Lane
 3: IL-38 transfected 293T cell lysates
 (30 µg).

Disclaimer : For Research Use or Further Manufacturing Only.