

## Anti-IL-1 Beta Antibody [Clone 4-1]

<b>Catalog Number</b>	LDG0021YA
<b>Package</b>	100 µg / 200 µg / Customized package

For full product information, images and publications, please visit [our website](#).



### Overview

#### Description

Interleukin-1 is a group of proteins mainly produced by leukocytes, regulates inflammation via controlling a variety of innate immune processes. Interleukin-1 beta (IL-1 beta), a member of the IL-1 family, is a pro-inflammatory cytokine produced by macrophages. This cytokine plays a crucial role for host-response to infection and injury, and also is an important factor in cytokine storms.

#### Product Note

Recommended dilution factor:

ELISA: 1:5000-20000

WB: 1:1000-5000

IFA: 1:200-1000

FACS: Assay dependent

Note: Working dilution for specific application should be determined by the investigator to obtain the best conditions.

### Specifications

#### Host

Mouse

#### Clonality

Monoclonal

#### Isotype

IgG2a

#### Clone Name

clone 4-1

#### Immunogen

Interleukin 1 beta

#### Reactivity

Human

#### Tainan Headquarters

+886-6-2536677

bd@leadgene.com.tw

#### Innovation & Research Center

+886-2-27065528

#### CLD Center

+886-6-2536677

**Application**

ELISA, WB, IFA, FACS

**Conjugation**

Unconjugated

**Concentration**

1 mg/mL

**Storage Buffer**

Phosphate Buffered Saline containing 0.03% ProClin 300, pH 7.4.

**Specificity**

Interleukin 1 beta

**Form**

Liquid

**Instruction****Shipping**

The product is shipped with polar packs. Upon receipt, store it immediately at -20°C or lower for long term storage.

**Stability & Storage**

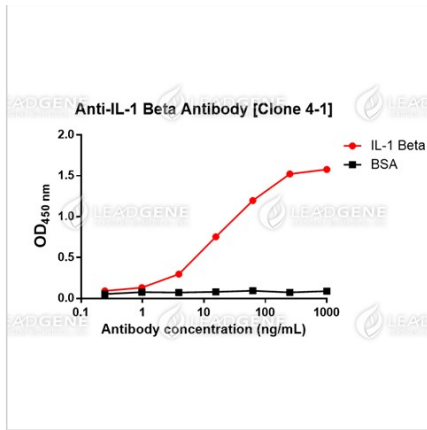
This product is stable after storage at:

- 2-8°C for 2 weeks under sterile conditions from date of receipt.
- -20°C or -80°C for 12 months under sterile conditions from date of receipt.

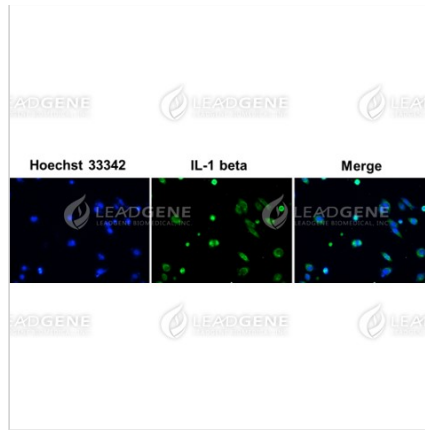
Avoid repeated freeze/thaw cycles.

Suggestion: Divide antibody into several vials. Keep only vials for usage at 2-8°C.

**Image****Tainan Headquarters** +886-6-2536677 [bd@leadgene.com.tw](mailto:bd@leadgene.com.tw)**Innovation & Research Center** +886-2-27065528**CLD Center** +886-6-2536677



**ELISA titration of Anti-IL-1 Beta Antibody [Clone 4-1]**  
 Titration curve of anti-IL-1 Beta antibody in ELISA. Red: IL-1 Beta; Black: BSA (negative control).



**Immunofluorescence analysis of Anti-IL-1 beta Antibody [Clone 4-1]**  
 HeLa cells were fixed in 4% PFA, permeabilized with PBS containing 0.1% Triton X-100. Cells were stained with mouse anti-IL-1 beta monoclonal antibody (1:200) followed by secondary antibodies (goat anti-Mouse IgG-iFluor 488, 1:400, green) and cell nuclei were stained with Hoechst 33342 (Blue).

**Disclaimer :** For Research Use or Further Manufacturing Only.