

## Anti-ZIKV E Antibody [Clone 125-1]

Catalog Number	LDG0020YA
Package	100 µg / Customized package

For full product information, images and publications, please visit [our website](#).



### Overview

#### Description

Zika virus belongs to the family Flaviviridae, genus Flavivirus. Zika virus is transmitted primarily by mosquitos, but also can be transmitted through sexual, vertical, and blood transfusion. The E protein is the major surface-exposed antigen of Zika virus, playing an key role in receptor binding during virus entry. This protein is the major target for neutralizing antibodies, and thus the focus of vaccine and anti-viral drug design.

#### Product Note

Recommended dilution factor:

ELISA: 1:5000-20000

WB: 1:1000-5000

IFA: 1:500-1000

FACS: Assay dependent

Note: Working dilution for specific application should be determined by the investigator to obtain the best conditions.

### Specifications

<b>Host</b>	<b>Clonality</b>
Mouse	Monoclonal
<b>Isotype</b>	<b>Clone Name</b>
IgG1	clone 125-1
<b>Immunogen</b>	<b>Reactivity</b>
Zika virus E	Zika virus

#### Tainan Headquarters

+886-6-2536677

bd@leadgene.com.tw

#### Innovation & Research Center

+886-2-27065528

#### CLD Center

+886-6-2536677

**Application**

ELISA, WB, IFA

**Conjugation**

Unconjugated

**Concentration**

1 mg/mL

**Storage Buffer**

Phosphate Buffered Saline containing 0.03% ProClin 300, pH 7.4.

**Specificity**

E (envelope) protein

**Form**

Liquid

**Instruction****Shipping**

The product is shipped with polar packs. Upon receipt, store it immediately at -20°C or lower for long term storage.

**Stability & Storage**

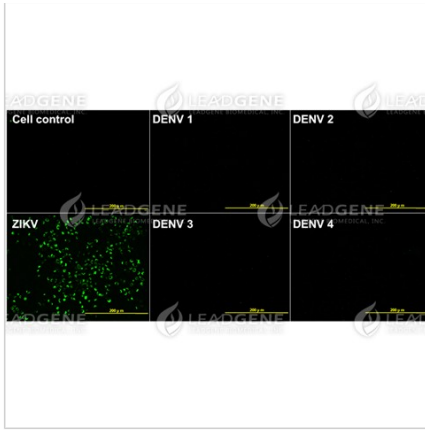
This product is stable after storage at:

- 2-8°C for 2 weeks under sterile conditions from date of receipt.
- -20°C or -80°C for 12 months under sterile conditions from date of receipt.

Avoid repeated freeze/thaw cycles.

Suggestion: Divide antibody into several vials. Keep only vials for usage at 2-8°C.

**Image****Tainan Headquarters** +886-6-2536677 [bd@leadgene.com.tw](mailto:bd@leadgene.com.tw)**Innovation & Research Center** +886-2-27065528**CLD Center** +886-6-2536677



Immunofluorescence analysis of Anti-ZIKV E Antibody [Clone 125-1]  
 ZIKV E mAb (1:400) were used for detecting ZIKV E protein in IFA. Scale bar: 200  $\mu$ m

**Disclaimer :** For Research Use or Further Manufacturing Only.