

Human Holo-Transferrin Protein

Catalog Number	LDG001PHY
Package	1 g / Customized package

For full product information, images and publications, please visit [our website](#).



Specifications

Species of Origin

Human

Affinity Tag

Tag free

Purity

>95% as determined by SDS-PAGE analysis.

Endotoxin Level

<0.1 EU per 1 µg of the protein by the LAL method.

Expression System

Pichia pastoris

Storage Buffer

Lyophilized from a solution of PBS, pH 8.0.

Molecular weight

The protein has a calculated MW of 75 kDa.
The protein migrates as 60 kDa under reducing condition (SDS-PAGE analysis).

Form

Lyophilized

Background

Tainan Headquarters

+886-6-2536677

bd@leadgene.com.tw

Innovation & Research Center

+886-2-27065528

CLD Center

+886-6-2536677

Background

Human Holo-Transferrin Protein is an important iron-binding protein that plays a crucial physiological role in the human body. It is primarily found in blood and bodily fluids, responsible for transporting and delivering iron to various tissues and cells. Transferrin consists of two identical subunits, each capable of binding two iron ions. In the bloodstream, Transferrin transports iron from iron storage sites such as the intestines, liver, and spleen to other tissues to meet the cellular demand for iron.

Uniprot ID

P02787

Synonyms

Beta-1 metal-binding globulin, Siderophilin, Transferrin

Instruction

Reconstitution

It is recommended to reconstitute the lyophilized protein in sterile H₂O to a concentration of 2 mg/mL and incubate the stock solution for at least 20 min to ensure sufficient re-dissolved.

After filtration, the solution can be stored under sterile conditions at 2-8°C for 30 days.

Stability & Storage

This product is stable after storage at:

- -20°C for 12 months in lyophilized state from date of receipt.
- 4°C for 1 month under sterile conditions after reconstitution.

Avoid repeated freeze/thaw cycles.

Shipping

The product is shipped with polar packs. Upon receipt, store it immediately at -20°C or lower for long term storage.

Image

Tainan Headquarters

+886-6-2536677

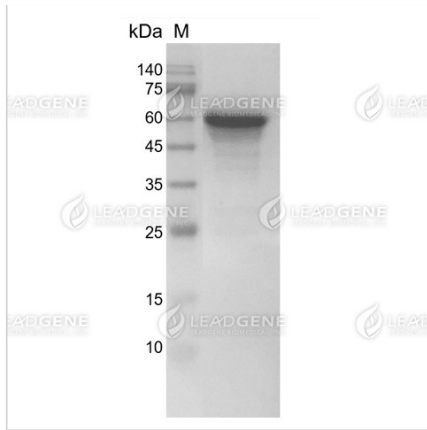
bd@leadgene.com.tw

Innovation & Research Center

+886-2-27065528

CLD Center

+886-6-2536677



SDS-PAGE analysis of recombinant
human holo-transferrin protein

Disclaimer : For Research Use or Further Manufacturing Only.