

Anti-DENV Capsid Antibody [Clone 25-4]

Catalog Number	LDG0014YA
Package	100 µg / Customized package

For full product information, images and publications, please visit [our website](#).



Overview

Description

Dengue virus belongs to the family Flaviviridae, genus Flavivirus and consists of four distinct serotypes (DENV1 to 4). Dengue virus is transmitted by mosquitos majorly of species *Aedes aegypti* and *Aedes Albopictus* that widespread around tropics and subtropics. Capsid protein is a small protein with very particular structural features, playing an integral role in replication and pathogenesis. Capsid protein interacts with host components, and thus is the potential drug target against DENV infection.

Product Note

Recommended dilution factor:

ELISA: 1:5000-20000

WB: 1:1000-5000

IFA: 1:500-1000

FACS: Assay dependent

Note: Working dilution for specific application should be determined by the investigator to obtain the best conditions.

Specifications

Host

Mouse

Clonality

Monoclonal

Isotype

IgG2b

Clone Name

clone 25-4

Immunogen

Dengue virus Capsid

Reactivity

Dengue virus

Tainan Headquarters

+886-6-2536677

bd@leadgene.com.tw

Innovation & Research Center

+886-2-27065528

CLD Center

+886-6-2536677

Application

ELISA, WB, IFA, FACS

Conjugation

Unconjugated

Concentration

1 mg/mL

Storage Buffer

Phosphate Buffered Saline containing 0.03% ProClin 300, pH 7.4.

Specificity

capsid

Form

Liquid

Instruction**Shipping**

The product is shipped with polar packs. Upon receipt, store it immediately at -20°C or lower for long term storage.




Stability & Storage

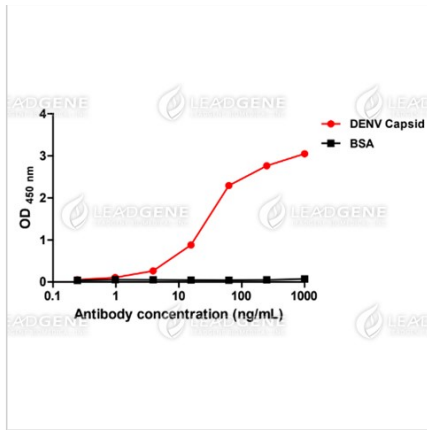
This product is stable after storage at:

- 2-8°C for 2 weeks under sterile conditions from date of receipt.
- -20°C or -80°C for 12 months under sterile conditions from date of receipt.

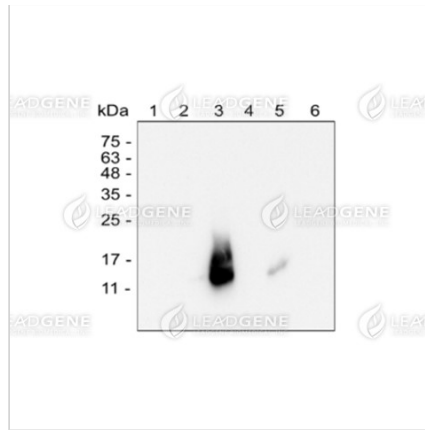
Avoid repeated freeze/thaw cycles.

Suggestion: Divide antibody into several vials. Keep only vials for usage at 2-8°C.

Image**Tainan Headquarters** +886-6-2536677 bd@leadgene.com.tw**Innovation & Research Center** +886-2-27065528**CLD Center** +886-6-2536677



ELISA titration of DENV Capsid antibody



Western blotting analysis of DENV Capsid antibody (1:1000)
 Lane 1: ZIKV-infected C636 cell lysate
 Lane 2: DENV 1-infected C636 cell lysate
 Lane 3: DENV 2-infected C636 cell lysate
 Lane 4: DENV 3-infected C636 cell lysate
 Lane 5: DENV 4-infected C636 cell lysate
 Lane 6: C636 cell lysate

Disclaimer : For Research Use or Further Manufacturing Only.