

## Anti-DENV pr Antibody [Clone 47-2]

**Catalog Number** LDG0013YA

**Package** 100 µg / Customized package

For full product information, images and publications, please visit [our website](#).



### Overview

#### Description

Dengue virus belongs to the family Flaviviridae, genus Flavivirus and consists of four distinct serotypes (DENV1 to 4). Dengue virus is transmitted by mosquitos majorly of species Aedes aegypti and Aedes Albopictus that widespread around tropics and subtropics. During dengue virus maturation, host protease furin cleaves prM to M and pr. The peripheral pr peptide is retained on the virus particle at acidic pH. This virus-pr complex does not bind target membranes and thus to inhibit virus-membrane interaction and blocks virus fusion.

#### Product Note

Recommended dilution factor:

ELISA: 1:5000-20000

WB: 1:1000-5000

IFA: 1:500-1000

FACS: Assay dependent

Note: Working dilution for specific application should be determined by the investigator to obtain the best conditions.

### Specifications

#### Host

Mouse

#### Clonality

Monoclonal

#### Isotype

IgG1

#### Clone Name

clone 47-2

#### Tainan Headquarter

+886-6-2536677 +886-6-2531536

info@leadgene.com.tw

#### Taipei Office

+886-2-27065528

**Immunogen**

Dengue virus Pr

**Application**

ELISA, WB, IFA, FACS

**Concentration**

1 mg/mL

**Specificity**

pr

**Reactivity**

Dengue virus

**Conjugation**

Unconjugated

**Storage Buffer**

Phosphate Buffered Saline containing 0.03%  
ProClin 300, pH 7.4.

**Form**

Liquid

**Instruction****Shipping**

The product is shipped with polar packs. Upon receipt, store it immediately at -20°C or lower for long term storage.

**Stability & Storage**

This product is stable after storage at:

- 2-8°C for 2 weeks under sterile conditions from date of receipt.
- -20°C or -80°C for 12 months under sterile conditions from date of receipt.

Avoid repeated freeze/thaw cycles.

Suggestion: Divide antibody into several vials.

Keep only vials for usage at 2-8°C.

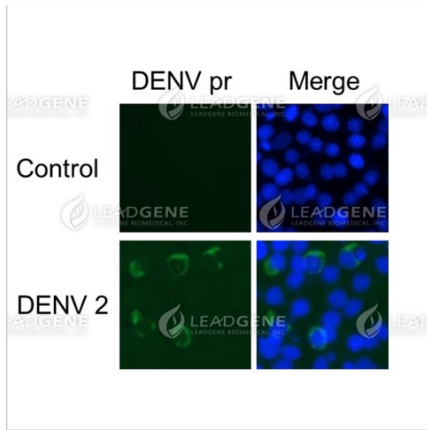
**Image****Tainan Headquarter**

+886-6-2536677 +886-6-2531536

info@leadgene.com.tw

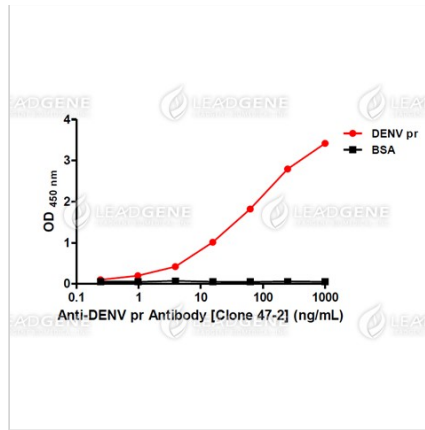
**Taipei Office**

+886-2-27065528



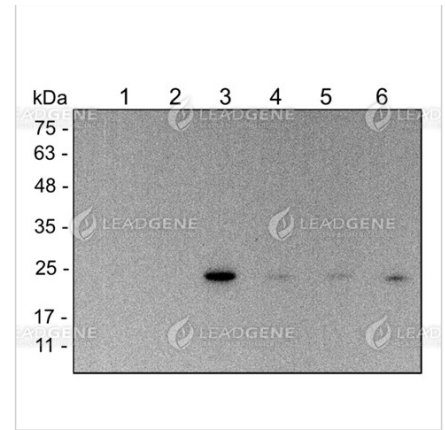
#### Immunofluorescence analysis of Anti-DENV pr Antibody [Clone 47-2]

Control BHK cells (uninfected) and Virus (DENV 2) infection BHK cells were fixed in 4% PFA, permeabilized with PBS containing 0.1% Triton X-100. Cells were stained with mouse anti-DENV pr monoclonal antibody followed by secondary antibodies (goat anti-Mouse IgG-iFluor 488, 1:400, green) and cell nuclei were stained with Hoechst 33342 (Blue).



#### ELISA titration of Anti-DENV pr Antibody [Clone 47-2]

Titration curve of anti-DENV pr antibody in ELISA. Red: pr; Black: BSA (negative control).



#### Western blotting analysis of Anti-DENV pr Antibody [Clone 47-2]

Virus infection BHK cell lysates were stained with mouse anti-DENV pr monoclonal antibody at 1:1000 dilution.

Lane 1: BHK cell lysate (10 µg),  
 Lane 2: ZIKV infection (10 µg),  
 Lane 3: DENV1 infection (10 µg),  
 Lane 4: DENV2 infection (10 µg),  
 Lane 5: DENV3 infection (10 µg),  
 Lane 6: DENV4 infection (10 µg).

**Disclaimer :** For Research Use or Further Manufacturing Only.