

## Anti-DENV E Antibody [Clone 102-1]

Catalog Number	LDG0011YA
Package	100 µg / Customized package

For full product information, images and publications, please visit [our website](#).



### Overview

#### Description

Dengue virus belongs to the family Flaviviridae, genus Flavivirus and consists of four distinct serotypes (DENV1 to 4). Dengue virus is transmitted by mosquitos majorly of species *Aedes aegypti* and *Aedes Albopictus* that widespread around tropics and subtropics. The Envelope protein is the major surface-exposed antigen and the primary target of the humoral immune response, and thus the focus of vaccine design.

#### Product Note

Recommended dilution factor:

ELISA: 1:5000-20000

WB: 1:1000-5000

IFA: 1:500-1000

FACS: Assay dependent

Note: Working dilution for specific application should be determined by the investigator to obtain the best conditions.

### Specifications

#### Host

Mouse

#### Clonality

Monoclonal

#### Isotype

IgG1

#### Clone Name

clone 102-1

#### Immunogen

Dengue virus E

#### Reactivity

Dengue virus

#### Tainan Headquarters

+886-6-2536677

✉ [bd@leadgene.com.tw](mailto:bd@leadgene.com.tw)

#### Innovation & Research Center

+886-2-27065528

#### CLD Center

+886-6-2536677

**Application**

ELISA, WB, IFA, FACS

**Conjugation**

Unconjugated

**Concentration**

1 mg/mL

**Storage Buffer**

Phosphate Buffered Saline containing 0.03% ProClin 300, pH 7.4.

**Specificity**

E (envelope) protein

**Form**

Liquid

**Instruction****Shipping**

The product is shipped with polar packs. Upon receipt, store it immediately at -20°C or lower for long term storage.




**Stability & Storage**

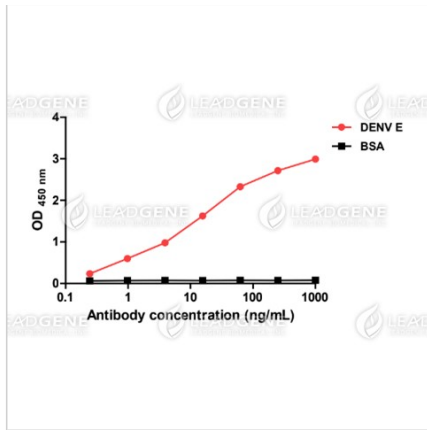
This product is stable after storage at:

- 2-8°C for 2 weeks under sterile conditions from date of receipt.
- -20°C or -80°C for 12 months under sterile conditions from date of receipt.

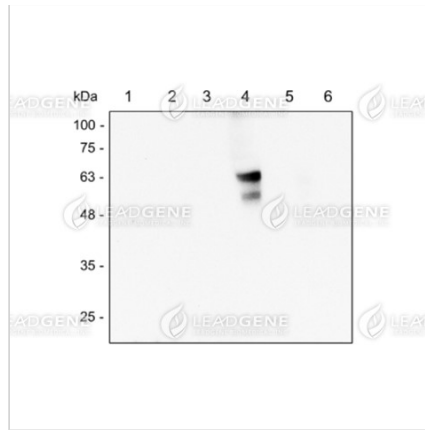
Avoid repeated freeze/thaw cycles.

Suggestion: Divide antibody into several vials. Keep only vials for usage at 2-8°C.

**Image****Tainan Headquarters** +886-6-2536677 [bd@leadgene.com.tw](mailto:bd@leadgene.com.tw)**Innovation & Research Center** +886-2-27065528**CLD Center** +886-6-2536677



ELISA titration of DENV E antibody



Western blotting analysis of DENV E antibody (1:1000)

Lane 1: Vero cell lysate

Lane 2: ZIKV-infected Vero cell lysate

Lane 3: DENV1-infected Vero cell lysate

Lane 4: DENV2-infected Vero cell lysate

Lane 5: DENV3-infected Vero cell lysate

Lane 6: DENV4-infected Vero cell lysate

**Disclaimer :** For Research Use or Further Manufacturing Only.