

## Anti-EGFP Antibody [Clone 42-2]

<b>Catalog Number</b>	LDG0008YB
<b>Package</b>	100 µg / Customized package

For full product information, images and publications, please visit [our website](#).



### Overview

#### Description

EGFP is a 27 kDa fluorescent protein derived from Aequorea victoria. EGFP has F64L and S65T mutations which result in brighter green fluorescence.

#### Product Note

Recommended dilution factor:

ELISA: 1:5000-20000

WB: 1:1000-5000

IP: 1:500-2000

IFA: 1:500-1000

FACS: 1:500-1000

Note: Working dilution for specific application should be determined by the investigator to obtain the best conditions.

### Specifications

#### Host

Mouse

#### Clonality

Monoclonal

#### Isotype

IgG2a

#### Clone Name

clone 42-2

#### Immunogen

Recombinant EGFP protein

#### Application

ELISA, WB, IP, IFA, FACS

#### Tainan Headquarters

+886-6-2536677

bd@leadgene.com.tw

#### Innovation & Research Center

+886-2-27065528

#### CLD Center

+886-6-2536677

**Conjugation**

Unconjugated

**Concentration**

1 mg/mL

**Storage Buffer**

Phosphate Buffered Saline containing 0.03% ProClin 300, pH 7.4.

**Specificity**

Recognizes EGFP

**Form**

Liquid

**Instruction****Shipping**

The product is shipped with polar packs. Upon receipt, store it immediately at -20°C or lower for long term storage.



**Stability & Storage**

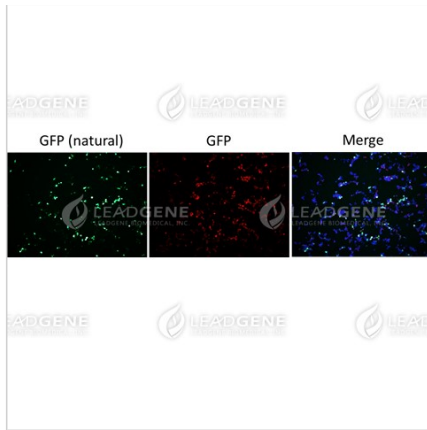
This product is stable after storage at:

- 2-8°C for 2 weeks under sterile conditions from date of receipt.
- -20°C or -80°C for 12 months under sterile conditions from date of receipt.

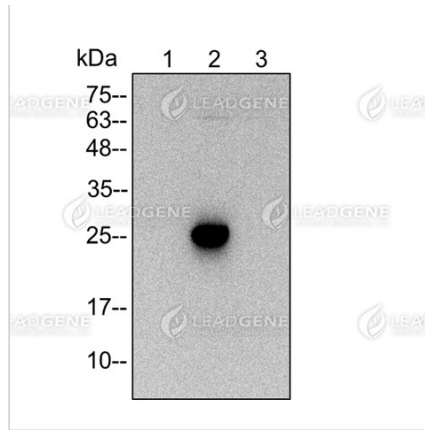
Avoid repeated freeze/thaw cycles.

Suggestion: Divide antibody into several vials. Keep only vials for usage at 2-8°C.

**Image****Tainan Headquarters** +886-6-2536677 [bd@leadgene.com.tw](mailto:bd@leadgene.com.tw)**Innovation & Research Center** +886-2-27065528**CLD Center** +886-6-2536677



Immunofluorescent: 293T cells were transfected with an EGFP fusion protein and fixed in 4% PFA, permeabilized with PBS containing 0.1% Triton X-100. Cells were either natural fluorescence (green) or stained with mouse anti-EGFP monoclonal antibody (1:400) followed by secondary antibodies (goat anti-Mouse IgG-iFluor 594, 1:400, red) and cell nuclei were stained with Hoechst 33342 (Blue).



Western blotting analysis of anti-EGFP mAb (1:2000)  
 Lane 1: 293T cell lysate  
 Lane 2: EGFP cell lysate  
 Lane 3: mcherry cell lysate  
 Lysate at 6  $\mu$ g per lane

**Disclaimer :** For Research Use or Further Manufacturing Only.