

Anti-mCherry Antibody [Clone 45-5]

Catalog Number	LDG0007YB
Package	100 µL / Customized package

For full product information, images and publications, please visit [our website](#).



Overview

Description

The mCherry protein is a basic red fluorescent protein derived from *Discosoma* sp. Leadgene mouse anti-mCherry mAb can recognize native and denature mCherry protein but not GFP.

Product Note

Recommended dilution factor:

ELISA: 1:5000-20000

WB: 1:1000-5000

IP: 1:500-2000

IFA: 1:500-1000

FACS: 1:500-1000

Note: Working dilution for specific application should be determined by the investigator to obtain the best conditions.

Specifications

Host

Mouse

Clonality

Monoclonal

Isotype

IgG2a

Clone Name

clone 45-5

Immunogen

Recombinant mCherry protein

Application

ELISA, WB, IP, IFA, FACS

Tainan Headquarters

+886-6-2536677

bd@leadgene.com.tw

Innovation & Research Center

+886-2-27065528

CLD Center

+886-6-2536677

Conjugation

Unconjugated

Concentration

1 mg/mL

Storage Buffer

Phosphate Buffered Saline containing 0.03% ProClin 300, pH 7.4.

Specificity

Recognizes mCherry but not GFP.

Form

Liquid

Instruction**Shipping**

The product is shipped with polar packs. Upon receipt, store it immediately at -20°C or lower for long term storage.



Stability & Storage

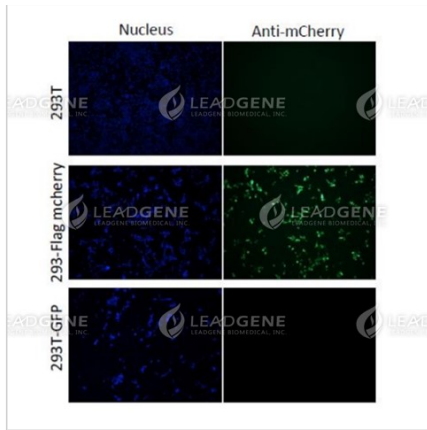
This product is stable after storage at:

- 2-8°C for 2 weeks under sterile conditions from date of receipt.
- -20°C or -80°C for 12 months under sterile conditions from date of receipt.

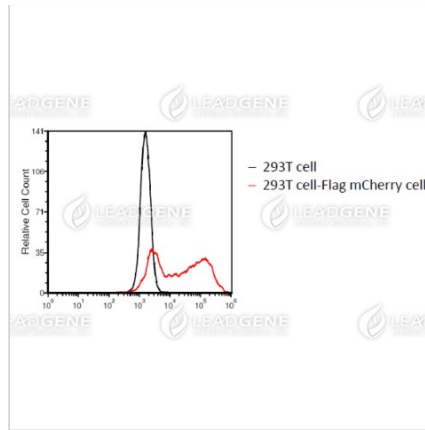
Avoid repeated freeze/thaw cycles.

Suggestion: Divide antibody into several vials. Keep only vials for usage at 2-8°C.

Image**Tainan Headquarters** +886-6-2536677 bd@leadgene.com.tw**Innovation & Research Center** +886-2-27065528**CLD Center** +886-6-2536677



Immunofluorescence analysis of anti-mCherry mAb (1:500)



Flow cytometry analysis of anti-mCherry mAb (1:1000)



Western blotting analysis of anti-mCherry mAb (1:2000)
 Lane 1: 293T cell lysate
 Lane 2: 293T-Flag mCherry cell lysate
 Lane 3: GFP fusion protein
 Lysate/protein at 6 µg per lane

Disclaimer : For Research Use or Further Manufacturing Only.