

Anti-SUMO Tag Antibody [Clone 2-2]

Catalog Number	LDG0006YB
Package	100 µg / Customized package

For full product information, images and publications, please visit [our website](#).



Overview

Description

SUMO tag can increase both expression and solubility of hard-to-express proteins, and it can be cleanly excised using SUMO protease. Leadgene anti-SUMO mAb is suitable for detecting SUMO fusion proteins.

Product Note

Recommended dilution factor:

ELISA: 1:5000-20000

WB: 1:1000-5000

IP: 1:500-2000

Note: Working dilution for specific application should be determined by the investigator to obtain the best conditions.

Specifications

Host

Mouse

Clonality

Monoclonal

Isotype

IgG2b

Clone Name

clone 2-2

Immunogen

Recombinant SUMO protein

Application

ELISA, WB, IP

Conjugation

Unconjugated

Concentration

1 mg/mL

Tainan Headquarters

+886-6-2536677

bd@leadgene.com.tw

Innovation & Research Center

+886-2-27065528

CLD Center

+886-6-2536677

Storage Buffer

Phosphate Buffered Saline containing 0.03% ProClin 300, pH 7.4.

Form

Liquid

Specificity

Recognizes SUMO tag

Instruction

Shipping

The product is shipped with polar packs. Upon receipt, store it immediately at -20°C or lower for long term storage.

Stability & Storage

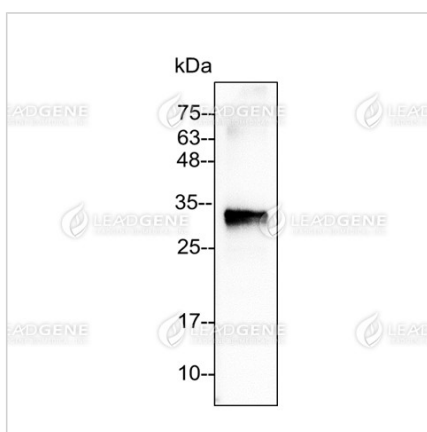
This product is stable after storage at:

- 2-8°C for 2 weeks under sterile conditions from date of receipt.
- -20°C or -80°C for 12 months under sterile conditions from date of receipt.

Avoid repeated freeze/thaw cycles.

Suggestion: Divide antibody into several vials. Keep only vials for usage at 2-8°C.

Image



Western blotting analysis of anti-SUMO mAb (1:2000)

Lane 1: SUMO-fusion recombinant protein (50 ng)

Tainan Headquarters

+886-6-2536677

bd@leadgene.com.tw




Innovation & Research Center

+886-2-27065528

CLD Center

+886-6-2536677

Disclaimer : For Research Use or Further Manufacturing Only.

Tainan Headquarters +886-6-2536677 bd@leadgene.com.tw**Innovation & Research Center** +886-2-27065528**CLD Center** +886-6-2536677