

## Anti-cMyc Tag Antibody [Clone 66-38]

|                       |                             |
|-----------------------|-----------------------------|
| <b>Catalog Number</b> | LDG0004YB                   |
| <b>Package</b>        | 100 µg / Customized package |

For full product information, images and publications, please visit [our website](#).



### Overview

#### Description

Mouse anti-cMyc tag mAb is specific to EQKLISEEDL tags which can be applied to several immunoassays including ELISA, WB, IP, IFA and FACS. This antibody has been identified in several sources (bacteria, yeast, and mammalian cells) of cMyc fusion protein.

#### Product Note

Recommended dilution factor:

ELISA: 1:5000-20000

WB: 1:1000-5000

IP: 1:500-2000

IFA: 1:500-1000

FACS: 1:500-1000

Note: Working dilution for specific application should be determined by the investigator to obtain the best conditions.

### Specifications

#### Host

Mouse

#### Clonality

Monoclonal

#### Isotype

IgG1

#### Clone Name

clone 66-38

#### Immunogen

Peptide: EQKLISEEDL (cMyc)

#### Application

ELISA, WB, IP, IFA, FACS

#### Tainan Headquarters

+886-6-2536677

bd@leadgene.com.tw

#### Innovation & Research Center

+886-2-27065528

#### CLD Center

+886-6-2536677

**Conjugation**

Unconjugated

**Concentration**

1 mg/mL

**Storage Buffer**

Phosphate Buffered Saline containing 0.03% ProClin 300, pH 7.4.

**Specificity**

Recognizes cMyc tag on either the N- or C-terminus of recombinant fusion protein.

**Form**

Liquid

**Instruction****Shipping**

The product is shipped with polar packs. Upon receipt, store it immediately at -20°C or lower for long term storage.

**Stability & Storage**

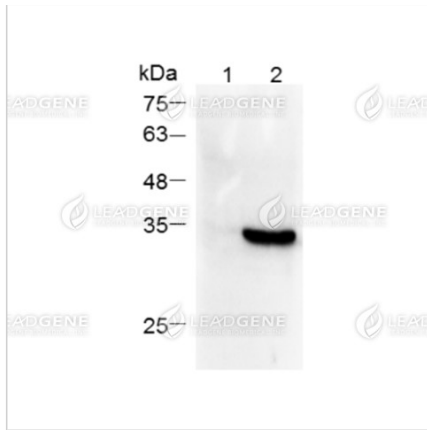
This product is stable after storage at:

- 2-8°C for 2 weeks under sterile conditions from date of receipt.
- -20°C or -80°C for 12 months under sterile conditions from date of receipt.

Avoid repeated freeze/thaw cycles.

Suggestion: Divide antibody into several vials. Keep only vials for usage at 2-8°C.

**Image**



Western blotting analysis of anti-c-Myc  
tag mAb (1:5000)

Lane 1: 293T whole cell lysate-  
untransfected

Lane 2: 293T whole cell lysate-  
transfected

Lysate/proteins at 30 µg per lane

**Disclaimer :** For Research Use or Further Manufacturing Only.