

Porcine Mycoplasma Hyopneumoniae Antigen Rapid Test Kit (10 strips)

Catalog Number LDG0004LR

Package Box

For full product information, images and publications, please visit [our website](#).



Overview

Description

Lateral flow for Mycoplasma hyopneumoniae p46 Protein detection.

Components

Item	Amount
Mycoplasma Hyopneumoniae Antigen Lateral Flow Device	10 strips
Prefilled Extraction Tube (400 µL Extraction Buffer/bottle)	10 bottles
Single-use Dropper	10 pcs
Single-use Sampling Swab	10 pcs
Instruction Manual	1

Specifications

Application

Lateral flow

Sensitivity

Limit of detection (LoD):1 ng/mL

Assay Range

1-5 ng/mL

Tainan Headquarters

+886-6-2536677

bd@leadgene.com.tw

Innovation & Research Center

+886-2-27065528

CLD Center

+886-6-2536677

Background

Background

Mycoplasma hyopneumoniae is the causative agent of swine enzootic pneumonia, a chronic respiratory disease in pigs. Its antigens are widely used in veterinary diagnostics and vaccine research to control infection and reduce economic losses in the swine industry.

Instruction

Shipping

The product is shipped in Room Temperature.

Stability & Storage

- Test kits should be stored at room temperature.
- Test cassettes must remain in sealed foil bags until use as they are sensitive to humidity.
- Test kits should not be reused.
- Do not use the kit if the package is damaged, or the physical appearance is altered.

Image

Tainan Headquarters

+886-6-2536677

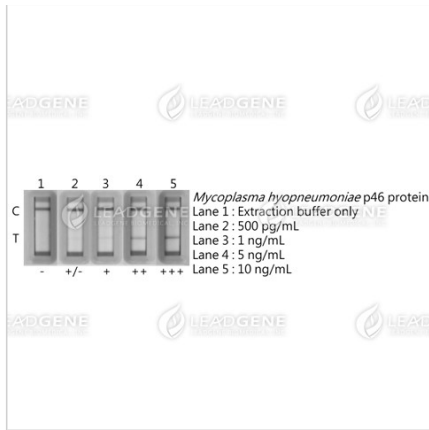
✉ bd@leadgene.com.tw

Innovation & Research Center

+886-2-27065528

CLD Center

+886-6-2536677



The sensitivity of the Porcine
Mycoplasma Hyopneumoniae Antigen
 Rapid Test Kit.

The LOD (Limit of Detection) for
 identifying *Mycoplasma*
hyopneumoniae p46 protein is
 approximately 1 ng/mL.

Disclaimer : For Research Use or Further Manufacturing Only.