

Anti-V5 Tag Antibody [Clone 7-1-8]

Catalog Number	LDG0003YB
Package	100 µg / Customized package

For full product information, images and publications, please visit [our website](#).



Overview

Description

Mouse monoclonal anti-V5 antibody is an antibody specific to GKIPNPLLGLDST (V5) tags which can be applied to several immunoassays including ELISA, WB, IHC, and Flow cytometry.

This antibody has been identified in several sources (bacteria, yeast, and mammalian cells) of V5-fusion protein.

Product Note

Recommended dilution factor:

ELISA: 1:5000-20000

WB: 1:1000-5000

IP: 1:500-2000

IFA: 1:500-1000

FACS: 1:500-1000

Note: Working dilution for specific application should be determined by the investigator to obtain the best conditions.

Specifications

Host

Mouse

Clonality

Monoclonal

Isotype

IgG2b

Clone Name

clone 7-1-8

Immunogen

Pepetide: GKIPNPLLGLDST (V5)

Application

ELISA, WB, IP, IFA, FACS

Tainan Headquarters

+886-6-2536677

bd@leadgene.com.tw

Innovation & Research Center

+886-2-27065528

CLD Center

+886-6-2536677

Conjugation

Unconjugated

Concentration

1 mg/mL

Storage Buffer

Phosphate Buffered Saline containing 0.03% ProClin 300, pH 7.4.

Specificity

Recognizes tag sequence of GKPIPPLLGLDST on either the N- or C-terminus of recombinant fusion protein.

Form

Liquid

Instruction**Shipping**

The product is shipped with polar packs. Upon receipt, store it immediately at -20°C or lower for long term storage.



Stability & Storage

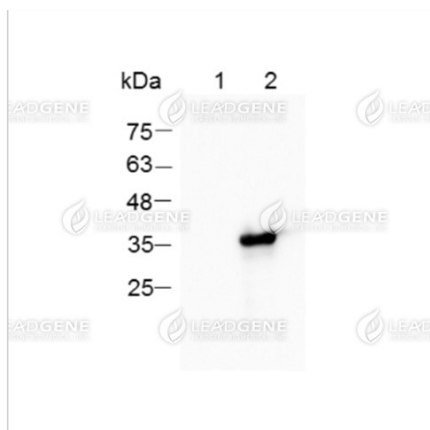
This product is stable after storage at:

- 2-8°C for 2 weeks under sterile conditions from date of receipt.
- -20°C or -80°C for 12 months under sterile conditions from date of receipt.

Avoid repeated freeze/thaw cycles.

Suggestion: Divide antibody into several vials. Keep only vials for usage at 2-8°C.

Image**Tainan Headquarters** +886-6-2536677 bd@leadgene.com.tw**Innovation & Research Center** +886-2-27065528**CLD Center** +886-6-2536677



Western blotting analysis of anti-V5

tag mAb (1:5000)

Lane 1: 293T whole cell lysate-
untransfected

Lane 2: 293T whole cell lysate-
transfected

Lysate/proteins at 20 µg per lane

Disclaimer : For Research Use or Further Manufacturing Only.