

## Gliadin Allergen Rapid Test Kit (10 strips)

**Catalog Number** LDG0003LR

**Package** Box

For full product information, images and publications, please visit [our website](#).



### Overview

#### Description

Lateral flow for Gliadin detection.

#### Components

Item	Amount
Gliadin Lateral Flow Device	10 pcs
Prefilled Extraction Tube with Dropper Tip and Scoop (2 mL Extraction Buffer/bottle)	10 bottles
Single-use Dropper	10 pcs
Single-use Sampling Swab	10 pcs
Instruction Manual	1

### Specifications

#### Application

Lateral flow

#### Sensitivity

Limit of detection (LoD):10 ng/mL

### Background

#### Tainan Headquarters

+886-6-2536677

bd@leadgene.com.tw

#### Innovation & Research Center

+886-2-27065528

#### CLD Center

+886-6-2536677

### Background

Gliadin is a major allergenic component of gluten found in wheat and related grains. Rapid test kits for gliadin detection are widely used in food safety monitoring to prevent cross-contamination and ensure compliance with gluten-free labeling standards.

### Synonyms

Gluten protein, Wheat gliadin, Gliadin antigen

## Instruction

### Shipping

The product is shipped in Room Temperature.

### Stability & Storage

- Test kits should be stored at room temperature.
- Test cassettes must remain in sealed foil bags until use as they are sensitive to humidity.
- Test kits should not be reused.
- Do not use the kit if the package is damaged, or the physical appearance is altered.

## Image

### Tainan Headquarters

+886-6-2536677

✉ [bd@leadgene.com.tw](mailto:bd@leadgene.com.tw)

### Innovation & Research Center

+886-2-27065528

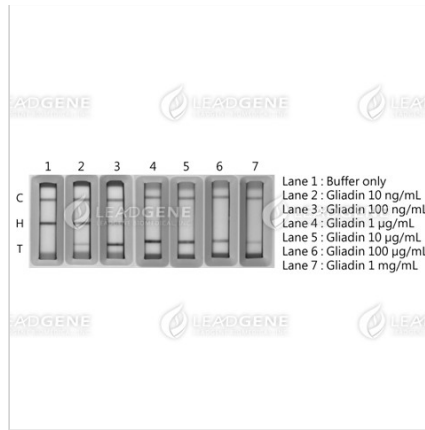
### CLD Center

+886-6-2536677



The effectiveness of the Gliadin Allergen Rapid Test Kit in identifying Gliadin in real spaghetti.

The Gliadin Allergen Rapid Test Kit can identify Gliadin in real spaghetti, regardless of whether it is unheated or heat-treated.



The sensitivity of the Gliadin Allergen Rapid Test Kit.

The Limit of Detection (LOD) for identifying Gliadin is approximately 10 ng/mL. Even at a very high Gliadin concentration of 1 mg/mL, it can still be determined via the Hook effect line.

**Disclaimer :** For Research Use or Further Manufacturing Only.